



SEApeat

Sustainable Management of Peatland Forests in Southeast Asia

SEApeat Fourth Project Coordination Meeting (PCM4) SEApeat Country Report for First Quarter 2014 -Malaysia

**Pullman Kuala Lumpur Bangsar
22-24 April 2014**

Partners :



Funded by :



European Union

Implemented by :



**Global Environment
Centre**

Main Project activities

- Activity Item 1.2.2 (Promoting principles of BMP through information exchange, awareness and capacity building) the sub-activities
- Activity Item 1.2.3 : Assess options for community involvement, livelihood improvement and pilot activities
- Activity item 2.1.3 : Implement activities in selected pilot sites to reduce the extent and severity of fires in peatland forests
- Activity item 2.2.1 : Support pilot sites to secure climate change related funding for REDD, carbon funds, PES, etc

ACTIVITY	Person/ Agencies involved	Dateline	MONTH												DETAILS DESCRIPTION	BUDGET (EUR)
			1	2	3	4	5	6	7	8	9	10	11	12		
6.3 Pilot testing of BMP & incentives at NSPSF																15,000
NSPSF - assess the suitability of selected options and incentives and implement pilot activities connected to rehabilitation.	Nagarajan Hyrul Izwan, Nurhayati & SHGSU	Feb – Oct 2014													Monthly tree planting activities involving the public and local communities – 9 times in a year (2013) Celebration of WWD 13	8,000
CSR/ Peatland rehabilitation package	Nagarajan Hyrul Izwan, Nurhayati & SHGSU	Feb – Oct 2014													To develop and secure 4 CSR projects for RMFR	1,000
Development of Ecotourism products or Community based tourism	Nagarajan , Hyrul Izwan, Nurhayati & SHGSU	Feb – Oct 2014													Ecotourism (including EE activities) products (services) have been identified and in process of providing training to conduct the activities Development of ecotourism packages & students packages Development of network to acknowledge and promote this activities under the Selangor Tourism & MOT Sponsoring of the basic facilities for organising eco-tourism related activities (life jackets, canoes, and others are related)	6,000

[illegible]

Peat Swamp Forest in Selangor State

FOREST RESERVES IN SELANGOR



Sungai Karang FR (50,106 ha)

Raja Musa FR (23,486 ha)

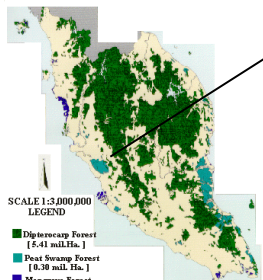
Pilot area for APFP &
SEApeat project

Kuala Langat Utara FR

(9,776 ha)

Kuala Langat Selatan FR

FOREST COVER MAP
PENINSULAR MALAYSIA



KEY :

FOREST TYPES :	
	INLAND FOREST
	MANGROVE FOREST
	PEAT SWAMP FOREST
DISTRICTS :	
	PANTAI KLANG
	SELANGOR TENGAH
	HULU SELANGOR

Project Partners & Supporters

- I. SFD – responsible for the management of RMFR. Co-partner of GEC in implementing the SEApeat project activities.
- II. Stakeholders – Government agencies, private sectors, etc. acting as both project supporters and beneficiaries of the project (Kuala Selangor Government Agencies (local authorities) , Fire & Rescue Dept , PKPS & others)
- III. CSR partners – provide support to community based rehabilitation programme, environmental education programme and others are related (as a co-funding) .
- IV. Community involvement – provide support in way of positive respond, commitment, cooperation, active participation and others (Sahabat Hutan Gambut Selangor Utara- Local villagers & Peatland Forest Rangers – Secondary School Students)



No.	SEapeat Project Activities for First Quarter 2014	Jan 2014	Feb 2014	Mac 2014	Remarks
Activity Item 1.2.2 (Promoting principles of BMP through information exchange, awareness and capacity building) the sub-activities					
1.	“Monthly Tree Planting Programme” For year 2014				Co-sponsored Planting dates for 2014 :- 21 June, 23 Aug, 27 Sept & 18 Oct
Activity Item 1.2.3 (Assess options for livelihood improvement and undertake pilot demonstration activities) the sub-activities					
2.	Training / Demo on rehabilitation of degradation Peat Swamp Forest (participation) • FRIM from 5-7 February 2014				Sponsored participation for GEC officer & SHGSU members
3.	World Wetlands Day 2014 Celebration (Exhibition) • Kg. Dato Hormat, sabak Bernam on 22 February 2014				Sponsored participation for SHGSU members
4.	Water Table and peat subsidence monitoring at North Selangor Peat Swamp Forest • from December 2013 – March 2014				Sponsored this monitoring and data collection
5.	Peat Depth and Clay Depth Assessment at Forest boundary of Raja Musa Forest Reserve • 11-12 January 2014				Sponsored this assessment
6.	Special meeting to review the Guidelines for the Design and Construction of Check Dam for Prevention and Control of Peatland Fire & Guidelines (Manuals) on Peat Development For Food Crops • Heritage Hotel Cameron Highland, Pahang from 10 – 13 February 2014				Sponsored participation for GEC officer
7.	Firefighting Operation at North Selangor Peat Swamp Forest • Starting on 23 rd Feb and Operation closed on 4 th April 2014				Sponsored firefighting operation at Parit 16-PKPS
Activity item 2.1.3 (Implement activities in selected pilot sites to reduce extent and severity of peat fires)					
8.	Cooperative Fire Management Plan (CFMP) for the North Selangor Peat Swamp Forest (NSPSF) • from January – March 2014				Sponsored consultation cost
9.	Gather information on the buffer zone activities adjacent to the North Selangor Peat Swamp Forest (NSPSF) • from January – March 2014				Sponsored this Assessment
10.	Forest fire patrolling and monitoring at RMFR • from end of January – March 2014				Sponsored this forest fire patrolling and monitoring
Activity item 2.2.1 (Support pilot sites to secure climate change related funding for REDD, carbon funds, PES, etc)					
11.	GEC has submitted two proposals to secure funding to support the on-going Peat Swamp Rehabilitation at Raja Musa Forest Reserve • from end of January – February 2014				Support for co-funding

For activity Item 1.2.2 (Promoting principles of BMP through information exchange, awareness and capacity building) the sub-activities conducted include the followings:-

**“Monthly Tree Planting Programme”
For year 2014**



COME AND GET
Involved

in GEC's monthly tree planting activity.

The dates are now open for registration:

15 FEBRUARY	21 JUNE
22 MARCH	23 AUGUST
26 APRIL	27 SEPTEMBER
24 MAY	18 OCTOBER

The activity is a collaborative effort by Selangor State Government, Selangor Forestry Department and Global Environment Centre. The rehabilitation programme is supported by the European Union, GEF-SGP Project and the Selangor State Government.

- Initiated by Global Environment Centre (GEC) and Selangor Forestry Department. There are five dates of the activity have been identified.
- The participation is limited to 100 participants and planting 400-600 seedlings for each of the session in one hectare area of the degraded forest reserve.
- Dates: **21 June, 23 Aug, 27 Sept and 18 Oct**
- Venue of the activity: **Parit 6 & Parit 7, Jalan Timur Tambahan, Hutan Simpan Raja Musa, Mukim Bestari Jaya, Daerah Kuala Selangor**
- The activity is a collaborative effort by Selangor State Government, Selangor Forestry Department and Global Environment Centre. The rehabilitation programme is supported by the European Union, HSBC Bank Malaysia and the Selangor State Government.

For activity Item 1.2.3 (Assess options for livelihood improvement and undertake pilot demonstration activities) the sub-activities conducted include the followings:-

- i) Training / Demo on rehabilitation of degradation Peat Swamp Forest organized under the ASEAN Peatland Forests Project (APFP) in collaboration with the Forestry Department Peninsular Malaysia (FDPM), Forest Research Institute Malaysia (FRIM), Selangor State Forestry Department ,Global Environment Centre (GEC) and North Selangor Peat Forest Friends (SHGSU) at FRIM from 5-7 February 2014.
- SEApeat project sponsored 2 SHGSU members and 2 GEC officers to participate in this training programme



ii) World Wetlands Day 2014 Celebration

- Sahabat Hutan Gambut Selangor Utara (SHGSU) were invited to participate as an exhibitor for the World Wetlands Day 2014 Celebration as an environmental event related to forest conservation at Kg. Dato Hormat, sabak Bernam on 22 February 2014
- This event organised by GEF-SGP Malaysia, Global Environment Centre and Sabak Bernam District Office.
- SEApeat project sponsored 7 SHGSU members to participate in this event.

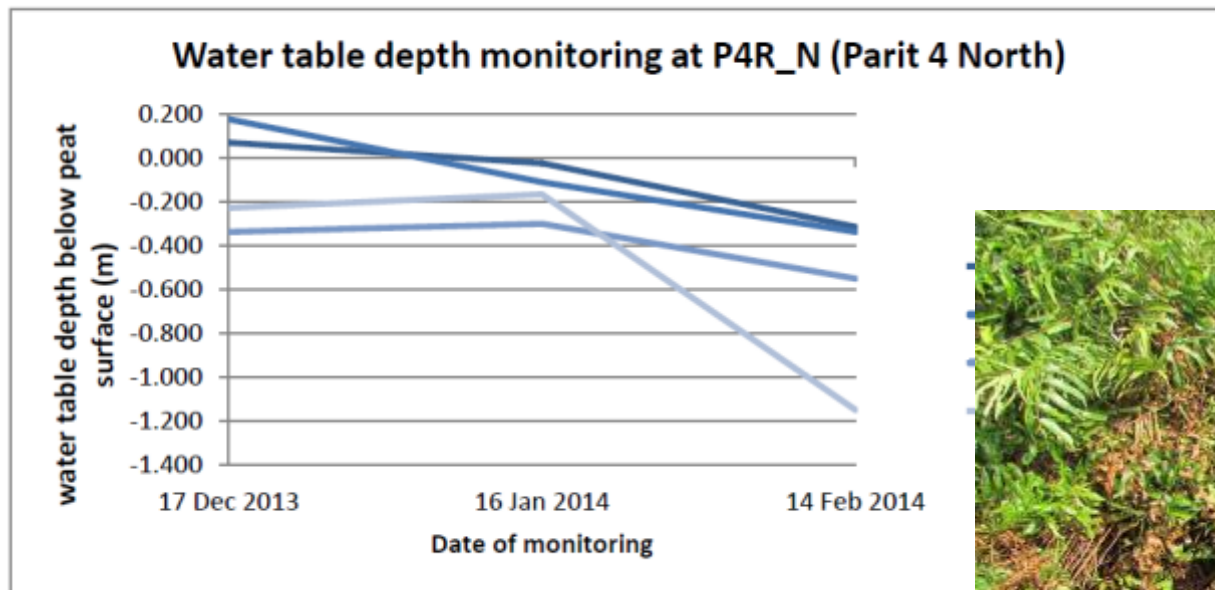


iii) Water Table and peat subsidence monitoring at North Selangor Peat Swamp Forest

- Once every month starting from January 2014, a team (consists of 4 SHGSU members, 4 volunteers, 4 SFD staffs and 1 GEC officer) visiting to 6 locations of North Selangor Peat Swamp Forest to collect data on
 - water table level and
 - subsidence rate

Results/achievements of this activity:

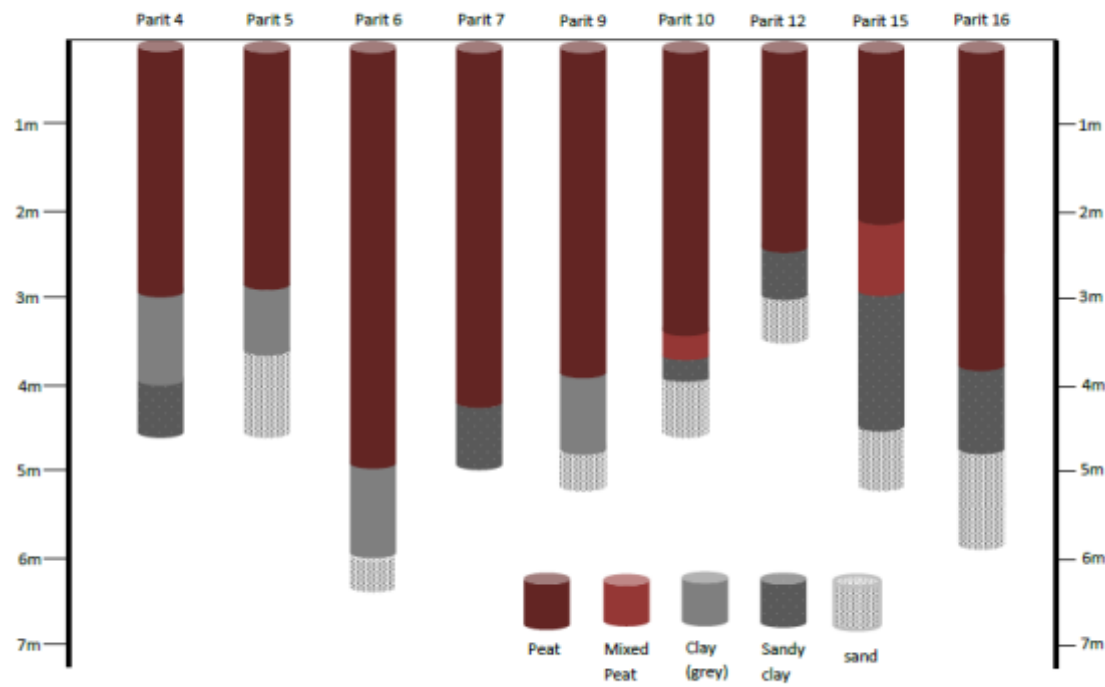
Changes in water level and subsidence rate is monitored
Data collected can be plotted in a graph for future reference



iv) Peat Depth and Clay Depth Assessment at Forest boundary of Raja Musa Forest Reserve

- Through the assessment, GEC had been able to collect all the basic and useful information on the peat depth and clay depth of the forest boundary at Raja Musa Forest Reserve. (11-12 January 2014)
- This information had been presented to Selangor Forestry Department and will be useful in hydrology management in Raja Musa Forest Reserve.

Figure1: PEAT AND CLAY PROFILE OF THE FOREST BOUNDARY OF RAJA MUSA FR- Parit 4 to Parit 16



v) Special meeting to review the ***Guidelines for the Design and Construction of Check Dam for Prevention and Control of Peatland Fire & Guidelines (Manuals) on Peat Development For Food Crops*** have been organized under the ASEAN Peatland Forests Project (APFP) in collaboration with the Forestry Department Peninsular Malaysia (FDPM), Drainage and Irrigation Department and Department of Agriculture at Heritage Hotel Cameron Highland, Pahang from 10 – 13 February 2014.

SEApeat project sponsored 1 GEC officer to participate in this meeting to share the outcome of the project into these guidelines development.



Location name	Date identified	Burnt area (ha)	Agencies involved
Bukit Belata Forest Reserve Forest compartment 1,2,5 35,37 &38	23 February 2014	\pm 249 ha	Stated above
Raja Musa Forest Reserve <ul style="list-style-type: none"> Forest Compartment 82,94,96,97,98,99, 100,101 & 102 	23 February 2014	\pm 1300 ha (estimated until 27 March 2014)	Stated above
Sungai Karang Forest Reserve <ul style="list-style-type: none"> Forest Compartment 9 (near to MRSM Merbau Berdarah) JPS Canal (near to Sungai Dusun Wildlife Reserve) Forest Compartment 145 (along the Sungai Panjang Road) 	17,23,25 February 2014	\pm 7 ha	Stated above
Total (ha)		\pm 1,556 ha	





For activity item 2.1.3 (Implement activities in selected pilot sites to reduce extent and severity of peat fires)

i) Cooperative Fire Management Plan (CFMP) for the North Selangor Peat Swamp Forest (NSPSF).

11 consultations with stakeholders have been conducted to discuss potential strategies and key information for the development of the Cooperative Fire Management Plan (CFMP) for the North Selangor Peat Swamp Forest (NSPSF).

Objective of the activity:

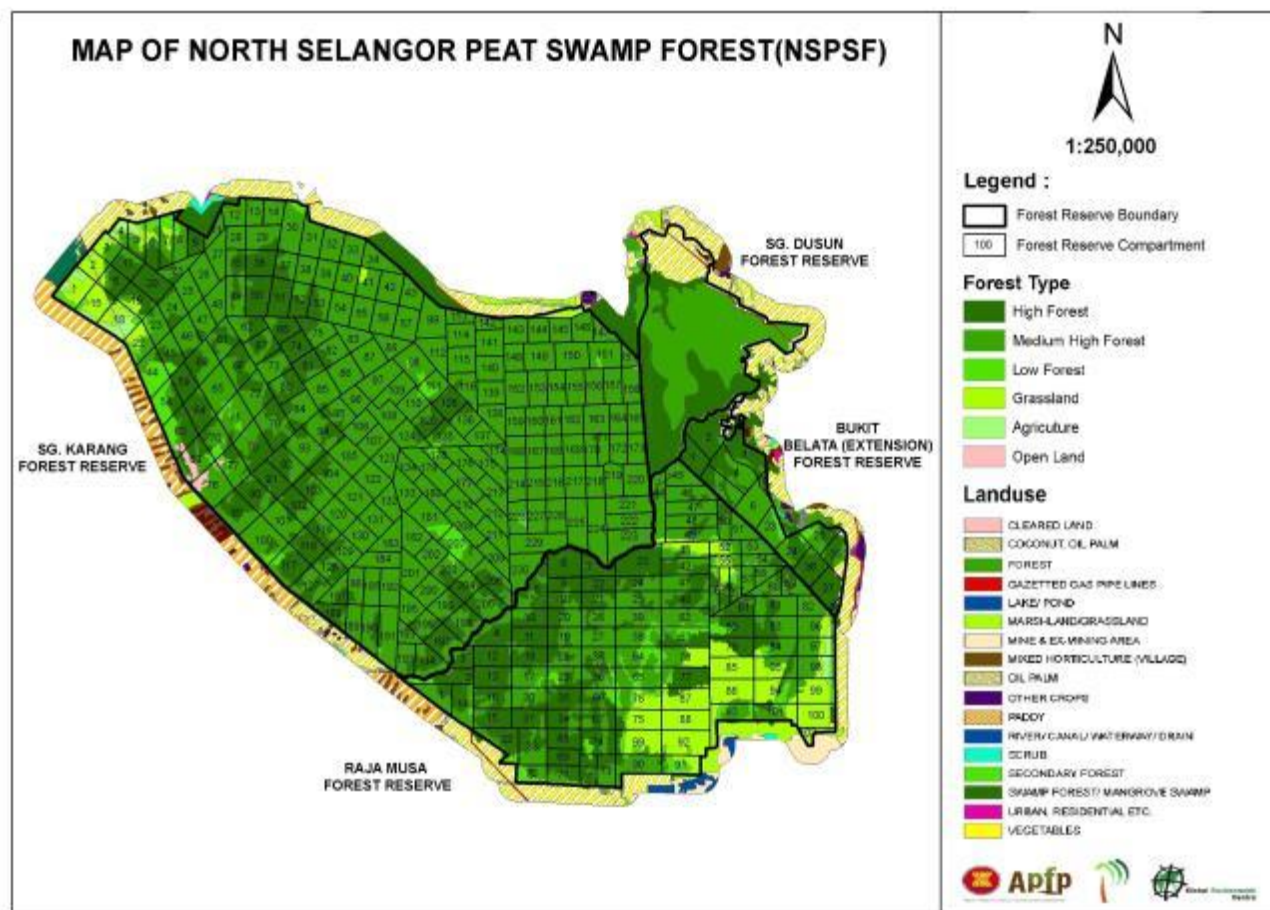
- a. Development of fire management strategies through a series of principles to guide the strategies and that will guide cooperative fire management across the site.
- b. A resource planning budget is developed at a high level to provide guidance toward the costs of implementing the plan across the site.
- c. An implementation plan has been prepared for both the prevention and suppression components.

Dates:

- 9th December 2013 – meeting with SFD on IMP and Cooperative Fire Management Plan
- 10th Dec 2013 – meeting with Selangor Fire & Rescue Department (afternoon) and SHGSU (evening)
- 12th December 2013 – meeting with Kuala Selangor District Office
- 13th December 2013 – meeting with Sime Darby Plantation
- 10th January 2014 – meeting with DOE Selangor
- 5th February 2014 – meeting with Sabak Bernam District Office for IMP & Cooperative Fire Management
- 10th February 2014 - meeting with JPS Federal in Cameron Highlands
- 11th February 2014 – meeting with DOE Putrajaya/Federal (HQ)
- 17th February 2014 - Meeting with MPOB
- 18th February 2014 – meeting with Hulu Selangor District Forest Office to develop SOP for forest fire prevention
- 19th February – meeting with Kuala Selangor District Office to discuss drafted SOP on fire prevention

ii) Gather information on the buffer zone activities adjacent to the North Selangor Peat Swamp Forest (NSPSF)

The objectives of this assessment to identify patterns of economic livelihood activities (agriculture, urban development, farming, etc.) along the outer border of peatlands and propose mitigation measures to reduce impact in the buffer zone (forest recovery, better agricultural management, eco-zone to reduce peat fires, etc.); and provide strategic buffer zone management plans as well as address land use conflicts and assist in the implementation of relevant activities



iii) Forest fire patrolling and monitoring at RMFR

Objective of the activity:

- ☐ To detect any early peat fire occurrences.
- ☐ To monitor the activities around the Peat Swamp Forest

Dates: last week of January to March 2014

Venue of the activity: Raja Musa Forest Reserve and Forest Reserve buffer areas.

1st team :- Parit 16 – PKPS

2nd team : Kg. Raja Musa – Simedarby





For activity item 2.2.1 (Support pilot sites to secure climate change related funding for REDD, carbon funds, PES, etc)



GEC has submitted two proposals to secure funding to support the on-going Peat Swamp Rehabilitation at Raja Musa Forest Reserve through community participation from HSBC Bank Malaysia Berhad & GEF-SGP Malaysia



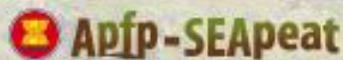
GLOBAL ENVIRONMENT FACILITY



THE GEF SMALL GRANTS PROGRAMME PROJECT PROPOSAL (ver. 07/13)

COVER PAGE			
PROJECT DETAILS			
Project Number	(For SGP use only)		
Project Type	<input type="checkbox"/> Full Project <input type="checkbox"/> Planning Grant <input type="checkbox"/> Strategic Project <input type="checkbox"/> Stakeholder workshop <input type="checkbox"/> Best practice & knowledge fair		
Project Title	Peat Swamp Forest Rehabilitation At Raja Musa Forest Reserve Through Community Action		
Expected Project Duration	<input type="checkbox"/> 18 mths <input checked="" type="checkbox"/> 24 mths <input type="checkbox"/> others: (please specify)		
Proposed Start Date	(For SGP use only)		
Project Location(s)	Buffer Zone Area Adjacent To Raja Musa Forest Reserve Part 8 - Part 10 (FC88)		
FINANCES			
Total GEF SGP Request	RM 145,440.00	US\$ 48,480.00	
Total Co-financing	RM 118,500.00	US\$ 39,500.00	
Total Project Cost	RM 263,940.00	US\$ 87,980.00	
Exchange rate used	RM1 = \$3		
APPLICANT			
Name of Organization	PERTUBUHAN SAHABAT HUTAN GAMBUT SELANGOR UTARA (PPM-018-10-10082012)		
Date Established	8 th August 2012	No. of Members	52 members
Correspondence Address	Lot 19117, Jalan Part 1, Kampung Sungai Sireh, 45500 Tanjung Karang, Selangor		
Telephone/ Fax	019-696 1454 / 014-867 5654	Email:	zainonkasim@yahoo.com
CONTACTS			
Principal Officer		Project Coordinator/ Manager	
Name	Zainon Bin Kasin	Name	Hyrul Izwani Bin Mohd Husin
Position	Secretary	Position	GEF programme officer / community officer
Telephone	019 696 1454	Telephone	-
Mobile	-	Mobile	014 867 5654
Email	zainonkasim@yahoo.com	Email	aremate_izwan_040586@yahoo.com
PROJECT			
Thematic/ Focal Area (choose one)	Project Types (choose at least one)	Project Characteristics (choose at least one)	
<input checked="" type="checkbox"/> Biodiversity <input type="checkbox"/> Climate Change <input type="checkbox"/> Adaptation <input type="checkbox"/> Mitigation <input checked="" type="checkbox"/> Land Degradation <input type="checkbox"/> Sustainable Forest Management <input type="checkbox"/> International Waters <input type="checkbox"/> Chemicals	<input checked="" type="checkbox"/> Demonstration project <input checked="" type="checkbox"/> Capacity Development <input checked="" type="checkbox"/> Awareness Raising <input type="checkbox"/> Policy Analysis <input type="checkbox"/> Information/ networking/ policy dialogue	<input checked="" type="checkbox"/> Notable community participation <input type="checkbox"/> Emphasis on sustainable livelihoods <input type="checkbox"/> Significant participation of indigenous peoples <input type="checkbox"/> Policy impact <input checked="" type="checkbox"/> Demonstration sites <input type="checkbox"/> Capacity building <input type="checkbox"/> Gender focus <input type="checkbox"/> Innovative financial mechanisms <input type="checkbox"/> Others: _____ (pls specify)	

THANK YOU FOR SUPPORTING RAJA MUSA FOREST REHABILITATION PROGRAMME



ORGANISED BY:



IN CONJUNCTION WITH WORLD WETLANDS DAY 2013

Our Precious Peatlands

www.seapeat.net

North Selangor Peat Swamp Forest, Malaysia

Thank you



Photograph



European Union