



8th PROJECT MANAGEMENT MEETING

PROGRESS REPORTING
JAN – JUNE 2013: APFP MALAYSIA COMPONENT

MANILA, PHILIPPINE
9 JULY 2013



PROJECT REPORTING OUTLINE

- **PROJECT BACKGROUND**
- **PROGRESS REPORTING**
- **FINANCIAL REPORTING**
- **SPECIAL REPORT ON PEATLANDS FIRE**
- **CONCLUSION**



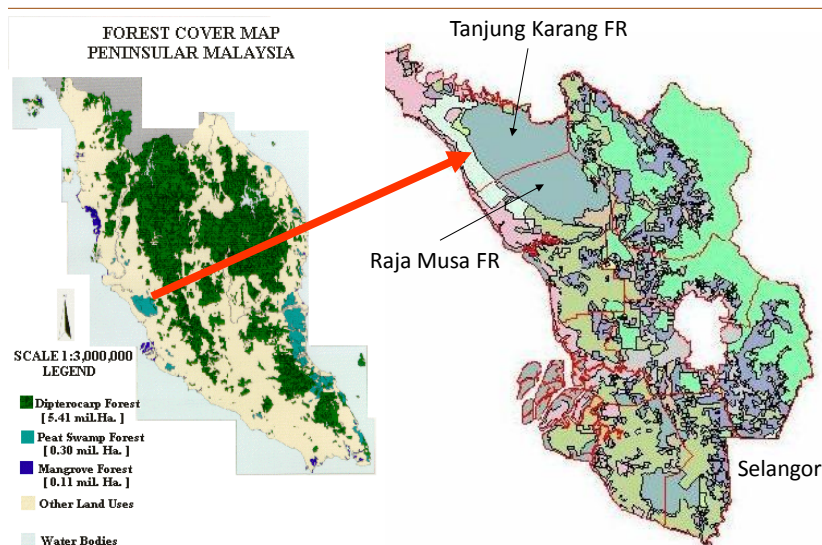
PROJECT BACKGROUND

PROJECT TITLE:

Rehabilitation and Sustainable Use of Peatland Forests in South East Asia – Malaysia Component

The sustainable use and rehabilitation of degraded peatlands in Malaysia will be emphasized under the project, particularly in the State of Selangor through capacity building, fire prevention and control, private sector partnership and demonstration of best management practices.

Peat Swamp Forests of Selangor





RAJA MUSA FR, SELANGOR, MALAYSIA

PROJECT REPORTING

OUTPUT	PROGRESS	%
1.1 Policy and planning framework for peatland management strengthened at national level	National Action Plan for Peatlands (NAP) has been finalized and adopted by Malaysian Cabinet in May 2011. It has been translated to National Language and disseminated to various government agencies for its implementation. The progress of implementation will be monitored by MNRE and reported to the National Peatland Working Committee on half-yearly basis.	70%
	Wetland Policy will be revised and incorporated in the preparation of National Biodiversity Strategic Action Plan by MNRE.	60%
	Project's awareness materials produced (bilingual) – pamphlet (1,000 copies), poster (1,000 copies), CD (500 copies) and calenders (1000 copies). In addition 500 caps, 200 t-shirts and 200 backpacks had been produced. These materials have been disseminated to the public and stakeholders during the workshops, seminar, training courses, public talks and scientific expedition.	100%

Output 1.2: Capacity for sustainable peatland management in Selangor State strengthened to support the up-scaling of good peatland management practices.	3 capacity building trainings conducted : i. TOT on peat assessment & management (3-6 Oct 2011) ii. FDRS Interpretation (12-13 Oct 2011) iii. FDRS and Forest Fires Workshop(19-21 Sept 2012). Total of 105 participants from 35 government agencies, public sector, research institutions and NGOs were involved.	70%
	National/ State Steering Committee on Peatlands and National/ State Working Committee established and meetings were conducted as planned. NPSC - 4 meetings (Aug & Oct 2010, 11 Oct 2011, 29 Oct 2012), NPWG - 2 meeting (5-8 Sept 2012, 27-29 June 2013), SPSC - 2 meetings (7 July & 3 Nov 2011), SPWG - 3 meetings (7 July & 12 August 2011 and 29 Aug 2012) and NPEA - 6 times a year or as needed. Participated as Malaysian Delegation to the 13 th & 14th Meeting of TWG and MSC on Transboundary Haze Pollution in Brunei (7-9 May 2012) & Bali (30 – 31 Oct 2012) respectively.	100%
	FDPM collaborating with FRIM to develop SAPP which is scheduled to completed in Nov 2013. The SAP will be guided by the NAPP.	30%

Output 1.3: Pilot site (RMFR) established as a focus for educational and awareness activities for the public.	Monthly tree planting events with SHGSU; 6ha planted with 2,791 trees involving 933 people in the 1st half of the year.	10%
	Awareness materials produced and currently being disseminated to various stakeholders during meetings/ public events. These will include such materials as project brochure (SHG – 1,000 copies), organizer (500 copies), postcard (500 copies) and car/ motorbike sticker (500 copies) produced to support Corporate Social Responsibility (CSR) activities conducted by HSBC and Bridgestone at the project site. FDRS and peat water management billboards have been erected at various strategic points within the project site. NPEA appoint vendor to produce newsletter/ progress report on APFP since 2010. Target 500 copies.	100%
	In collaboration with Selangor State Government, Selangor Forestry Department and GEC, 8 public events conducted - WWD 2011, WWD 2012, WWD 2013 , WFD 2013 , public talks and several tree planting events conducted at RMFR; Total participants exceeded 2,500 people.	100%

Output 1.4: Component technically supported	NPEA established and operational under Wetland Management Section of FDP. GEC formally appointed as National Expert in February 2012.	100%
Output 2.1: Status and trends of Malaysian peatlands determined.	National Forest Inventory 5 (or NFI5) activity on peatlands started in 2012. To date, data collection exercise has been completed and FDP is in the process of preparing the report. These are currently being processed by the GIS unit of FDP. Spatial data on peatlands distribution are also requested from the Agriculture Department and Malaysia's Remote Sensing Agency. FDP is collaborating with the Faculty of Forestry UPM to prepare the final assessment of peatland profile and plan to complete the study by Sept. 2013. Malaysian Wetland Directory will be reviewed through G4NRE Database under MaGGDI MNRE.	50%
	Assessments for carbon content of APFP pilot site has been carried out by FRIM. A paper on the subject was presented at the workshop in Bogor, Indonesia. Additional funds made available for the publication of the report. Draft final reports of Kuala Langat South Peat Swamp Forest (KLSPSF) Blueprint had been deliberated with project proponent and the study to be published in Sept 2013.	80%

Output 2.1: Status and trends of Malaysian peatlands determined.	Site specific FDRS data on Raja Musa Forest Reserve has been worked out by Malaysian Meteorological Department (MMD). Critical fire prone areas within the State of Selangor are identified by Department of Environment (DOE) through analysing the hotspot datas. These areas are regularly monitored on the ground by the respective enforcement agencies. At the pilot site, SHGSU and the Forest Rangers from Bestari Jaya Forest Office monitors the situation. FDP is collaborating with Faculty of Forestry UPM to prepare the digitized spatial maps for Malaysia peatland and plan to completed the study by Nov 2013.	60%
	FDP collaborated with Malaysian Nature Society in conducting a scientific biodiversity to NSPSF between 15-25 May 2013 and 24 June – 6 July 2013. The expedition seminar is scheduled for Sept. 2013. APFP Malaysia component is proposing Maludam NP and/or Loagan Bunut NP for the ASEAN Heritage Site.	50%

Output 2.2: Degradation of peatlands by fire in Selangor State reduced.	Assessment of fire prone areas in NSPSF - Activity included in the IMP.	20%
	SFD Fire Patrol Team re-activated and mobilized. Community involvement in forest rehabilitation activities launched. Effective fire prevention measures identified and being implemented at the pilot site with various stakeholders' involvement. Contractor appointed to carryout boundary marking (including supply of signboards) of 50km long for the NSPSF. Selangor F.D carryout similar project at Kuala Langat Selatan FR involve boundary marking of 18.3 km long which cost RM 35,700.00. Contractor completed 25km border demarcation of the North Selangor PSF in 2013.	70%
	FDRS has been developed tested and verified by MMD for the State of Selangor. The system has been expanded for Peninsular Malaysia and other ASEAN countries, and updated to incorporate Google Earth technology. Regional workshop on FDRS to be conducted on 19-23 Sept 2013 by MMD. Funds has been committed by RPEA/GEC for new software and FDPM for new hardware. Planned for next reporting period.	70%

Output 2.2: Degradation of peatlands by fire in Selangor State reduced.	An organization known as SHGSU was officially formed with the main purpose of providing support to SFD Forest Fire Team in detecting and fighting forest fire at NSPSF. The members come from 4 villages located around the NSPSF. Their members took active part in all planting program organized by the FD at Raja Musa FR. They supply seedlings for tree planting activities through buy-back system and facilitate ecotourism activities to the peat swamp forest through Sg. Sireh Homestay outfit. To date 8 community nurseries had been established through project funding. A visit to National Academy for Handicrafts (in Rawang) and National Handycraft Centre (in KL) were organised for 40 SHGSU members on 7 March 2013 as part of livelihood exposure.	50%
	MMD has set up a unit of Automated Weather Monitoring (AWM) Station at the nearby Ldg. Tennnamaram (Sime Darby) Plantation to improve the forecast for FDRS for RMFR. Fine tuning of FDRS for RMFR has been completed. FDRS signage has been placed at strategic locations to notify and engage the local communities.	70%

Output 2.3: Guidelines for integrated peatland management in Malaysia developed and promoted.	Tender document for IMP already prepared and uploaded in the MoF "e-Perunding" system. Meeting for selection of consultants will be called on 11 July 2013.	0%
	BMP guidelines for palm oil plantation on peat have been developed by both MPOB (2011) and RSPO (2012) . BMP guidelines for agricultural practices on peat currently being developed in collaboration with DOA.	30 %
	FDPM is collaborating with FRIM to document the BMPs from the demonstration sites i.e. KLSPSF, SEPPSF, Loagan Bunut NP and Klias FR. The study is expected to be completed by Nov 2013.	20%

Output 3.1: Sustainable management options for peatlands showcased through demonstration sites.	Visit to Raja Musa FR (2011: 15 person), BMP Palangkaraya, Kalimantan Tengah (Nov 2011: 3 persons) /Peer Learning Programme on BMP to Thailand (Apr 2012: 6 persons)/ Technical visit to SEPPSF, Pahang (Jul 2012: 20 persons)/ Study tour to Klias Peatland Centre of Excellence, Sabah (Sept 2012: 20 persons)/Study Tour On "Best Management Practice" To UMTNP, Viet Nam (3-6 Dec 2012: 8 persons),Study Tour to Riau, Sumatera (27-30 Mac 2013: 13 persons)/ Peer Learning Programme to Banjarmasin, Kalimantan, Indonesia (17-20 Jun 2013: 4 persons); Study tour to Loagan Bunut NP, Sarawak (27 Jun 2013: 25 persons). Total persons involved: 114	100%
	Integrated management strategies for NSPSF reviewed and updated. Part of activity under IMP for NSPSF	10%
Output 3.2: Integrated management strategies for North Selangor PSF and buffer zone adopted.	Management strategy for NSPSF buffer zone developed and finalised by Y3. Part of activity under IMP for NSPSF	10%
	Development actions at NSPSF buffer zone determined by management strategy. Part of activity under IMP for NSPSF	10%
	Rehabilitation plan for RMFR developed, approved and operational. Part of activity under IMP for NSPSF	10%

Output 3.3: Rehabilitation of degraded peat swamp forest demonstrated in Raja Musa F.R and adjacent buffer zone.	FDPM is collaborating with FRIM to conduct a workshop on rehabilitation techniques. The training will be conducted in Sept 2013.	10%
	Planting an area of 60 ha in Compt. 99 & 100 Raja Musa FR. Treatment was also carried out in the area that was planted in 2011 in Compt 55 of Kuala Langat Selatan FR. It comprise an area of 70 ha. From 2008-2009, 850 units of small and medium sized dams were constructed by SFD Two concrete check dams were also installed at Parit 4 & Parit 7 of RMFR. Another 400ha (recently burned area) identified for rehabilitation at RMFR. DOE have allocated RM70,000 for the construction of new check-dam in the area.	100%
	FDPM is collaborating with MNS to document forest rehabilitation activities in Raja Musa FR. Study to be completed by Nov 2013.	10%
	Results of review of existing livelihood activities documented and distributed. Part of socio-economic study for NSPSF under IMP preparation.	10%
Output 4.1: Sustainable economic activities in buffer zone of NSPSF enhanced.	Report on study to reduce impacts of development on peatlands completed. Part of socio-economic study for NSPSF under IMP preparation.	10%
	Community members are actively involved in the rehabilitation and awareness activities related to RMFR. They supply seedlings for tree planting activities through buy-back system and facilitate ecotourism activities to the peat swamp forest through Sg. Sireh Homestay outfit. On-going community activity.	50%
	A number of local farmers (10) are involved in canal blocking and/or general peat swamp water management at Parit 6 supervised by SHGSU.	20%

FINANCIAL REPORTING

Table A : Summary of expenditure according to Outcomes

Outcomes	Overall Budget	Budget Allocation 2013	Expenditure (Jan'10 – Dec '12)	Cumulative Expenditure to Date (Jan'10- June'13)	Expenditure Jan-June 2013	Balance Budget 2013	Overall Balance Budget
I. Capacity Building for Sustainable Peatland Management	240,000	121,736	78,933.33	142,245.41	63,312.08	58,423.92	97,754.59
II. Reduction of Peatland Degradation	262,000	151,957	97,686.55	156,930.36	59,243.81	92,713.19	105,069.64
III. Integrated Management and Rehabilitation of Peatlands	271,600	239,633.	20,650.76	56,087.21	35,436.45	204,196.55	215,512.79
IV. Multi-stakeholder partnerships	80,000.	60,000	0.00	0.00	0.00	60,000.00	80,000.00
V. Project Management	26,400	12,000	8,291.38	18,419.76	10,128.38	1871.62	7,980.24
TOTAL	880,000	585,326	205,562.02	373,682. 74	168,120.72	417,205.28	506,317.26

Table B : Summary of expenditure according to Accounting categories

Accounting Categories	Annual Budget 2013	Previous (Jan 2010 - Dec 2012)	Current (Jan – June 2013)	Cumulative Expenditure (Jan'10- June'13)	Balance Budget 2013
A.Community Based Services	77,050.00	-	-	-	77,050.00
B. Equipment	6,000.00	25,267.81	-	25,267.81	6,000.00
C.Technical Support Studies	272,100.00	47,187.73	70,602.66	117,790.39	201,497.34
D. Training/ Workshops/ Awareness/ Publications	198,500.00	105,953.96	77,094.87	183,048.83	121,405.13
E. Staff salaries and allowances	12,000.00	5,380.47	5,293.14	10,673.61	6,706.86
F. Operation and maintenance	14,168.00	21,455.33	15,130.05	36,585.38	(962.05)
G. Travel and subsistence	5,508	316.72	-	316.72	5508.00
Grand Total	585,326.00	205,562.02	168,120.72	373,682.74	417,205.28



YEAR	CO-FINANCING (USD)
2009	147,000.00
2010	160,000.00
2011	446,000.00
2012	450,000.00*
TOTAL	1,203,000.00



SPECIAL REPORT ON PEATLAND FIRES

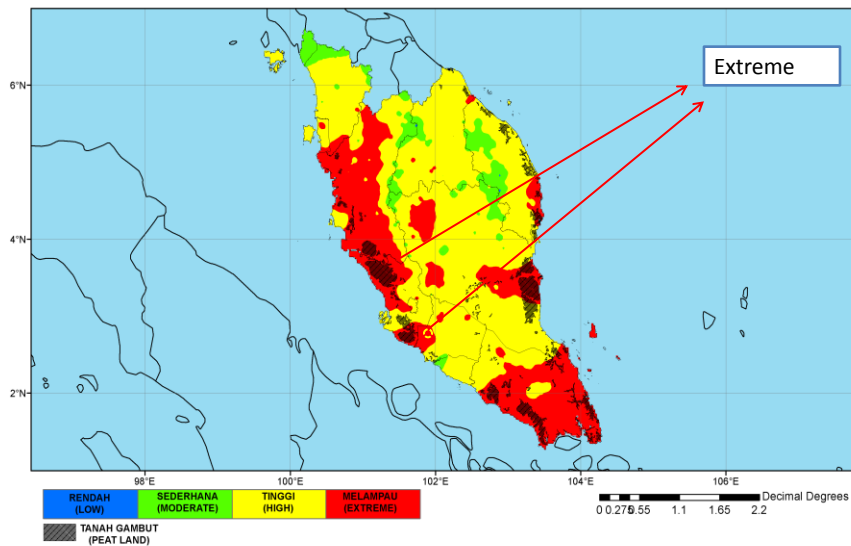


INDEKS CUACA KEBAKARAN

FIRE WEATHER INDEX (FWI)

25-06-2013

API -242 (7am)





PEATLANDS FIRE AT KLPSF (220 HA)

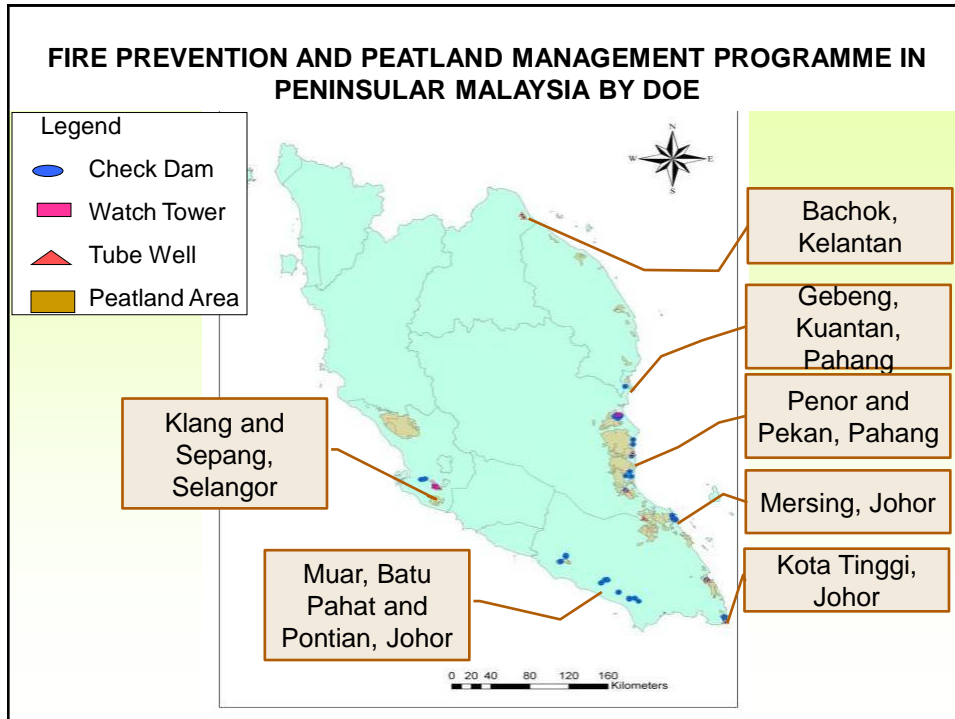


WATCH TOWER & TUBE-WELL AT KLPSF

**Rented case machine for fire suppression works
funded by APFP**

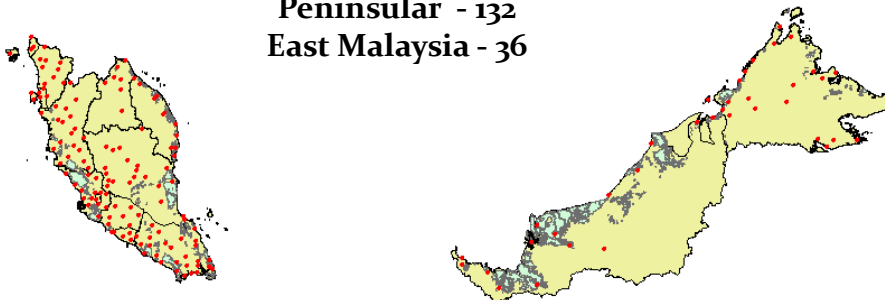


Peatland fire in the buffer zone area of Raja Musa FR

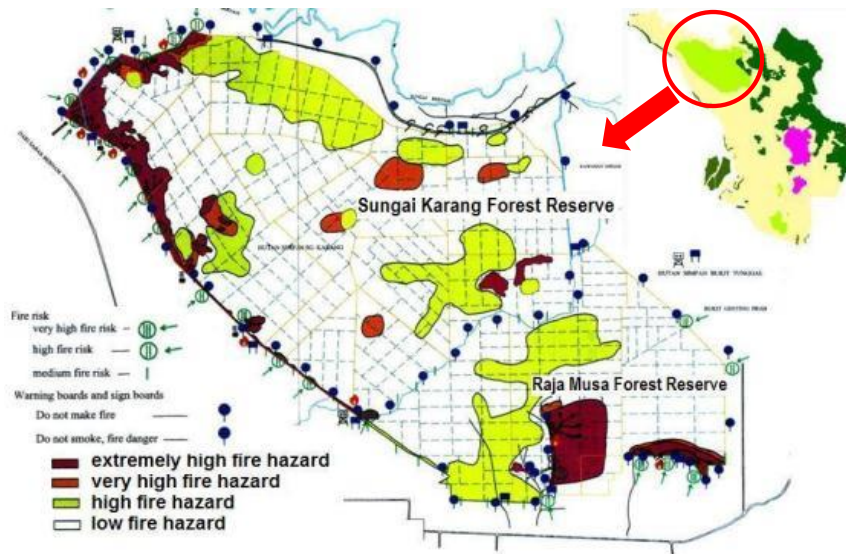


**DOE had constructed more weather stations
from 39 to 168**

**Peninsular - 132
East Malaysia - 36**



FIRE RISK MAP IN NORTH SELANGOR PSF



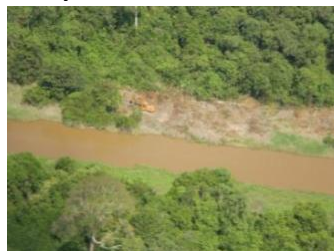
Demarcation & Monitoring Activities of peat swamp Forest Reserve



Boundary marking & maintenance



Outerboundary Survey by licensed surveyor



Periodical ground & aerial patrolling

FDRS Signage: Fire Risk Index



**Signage at Ranger's Office
Batang Berjuntai**



Signage at fire prone area



Concrete check-dam constructed under APFP



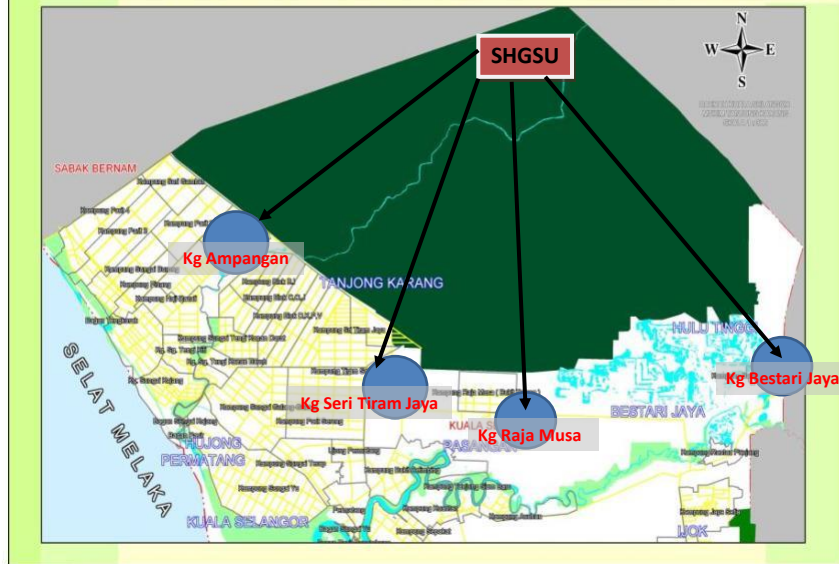
**Check-dam/canal blocking
constructed using heavy
machinary to raise the water
level at the pilot site**



**Clay bund constructed by PKPS to raise the water level
at the fire prone area**



KAMPUNG DI SEKITAR HUTAN SIMPAN DI KUALA SELANGOR



33

Monitoring by SGHSU



34

FIRE SUPPRESSION BY SHGSU



35

Construction of check-dam by SHGSU





CONCLUSION

- Project coordination amongst the various stakeholder has improved because of the APFP project. **Transformation** can be seen in its implementation/approach; from **sectoral** to **multi sectoral** approach.
- Recent **collective efforts** to curb and suppress forest fire incidences at the pilot site with the various involvement of **local government agencies, private sector** and **communities** is a very good example of this and shows multi stakeholder ownership/ responsibility.



- Implementation of **NAP on Peatlands** actively being pursued by the various stakeholders and closely monitored by MNRE and National Peatland Working Committee.
- Project activities implemented at the pilot site shows encouraging progress esp. related to **forest rehabilitation** and the application of **FDRS system**.
- Establishment of **Sahabat Hutan Gambut Selangor Utara** have created a platform for effective **community participation** in the rehabilitation and forest fire monitoring and prevention activities at Raja Musa Forest Reserve, including creating **livelihood opportunities** for local communities.



- There is a need for peatland project management team to continuously undergo **capacity building** training to manage the project effectively.
- As recommended under MTR Report, Malaysia should play an important role to support the continuation of the project services and benefits beyond project completion in 2014, including using national funds.
- State of Sarawak agreed in principal to consider including Logan Bunut NP & Muladam NP for nomination as **ASEAN Heritage Site**



THANK YOU

**FORESTRY DEPARTMENT PENINSULAR
MALAYSIA**

APFP National Project Executing Agency

