

8th APFP Project Management Meeting

Progress Updates of APFP Project

Regional Component

Nov 2012 – July 2013

Funded by:



IFAD

Enabling poor rural people to overcome poverty



gef

GLOBAL ENVIRONMENT FACILITY
INVESTING IN OUR PLANET

Project:



Apfp

ASEAN Peatland Forests Project www.aseanpeat.net

9th July 2013

Manila, Philippines

Regional Project Executing Agency



Global Environment
Centre



Progress on Regional Component

COMPONENT SUB-OUTCOME 1:

Capacity for implementation

of APMS enhanced



Apfp

ASEAN Peatland Forests Project www.aseanpeat.net

1

Progress on Regional Component

Output 1.1: Coordinated Implementation of the APMS and NAPs supported

- Technical support and capacity building to assess peatlands

Follow up TOT training in Myanmar in December 2012 and survey in Cambodia in June 2013 with funding from EU.

Presentation to TWG Mekong on 31 March 2013 and MSC Mekong on 1 April 2013 in Cambodia.



Progress Report on Regional Component

2. 10th TWG / 3rd MSC Meeting – North Mekong Group

1. Date : 31 March – 1 April 2013
2. Venue : Siem Reap, Cambodia
3. Cambodia, Lao PDR, Thailand, Viet Nam, the ASEAN Secretariat, the ASEAN Specialised Meteorological Centre (ASMC) and the Global Environment Centre
4. A combined presentation of APFP and SEAPEAT projects were made to both TWG and MSC

Key issues in the report:

The Meeting noted the good progress made by all the AMS and other partners involved in the project as well as the positive review of the projects by the independent Mid-Term Review (for APFP) and Results Oriented Monitoring (for SEAPEAT project).

The Meeting supported the development of a second phase for the two projects.

The Meeting encouraged the completion and implementation of National Action Plans on peatlands and the incorporation of peatland management into other relevant plans.



Progress on Regional Component

Output 1.2: Regional programme for capacity building and raising awareness implemented

i) Workshop: "International-Indonesia Peatland Conversation" February 25-27, 2013

Oral Presentation: **Experience Of Peatland Management in ASEAN Region**

ii) Workshop: Towards Sustainable Land Management practices for peatlands – special focus on drained areas FAO, Rome 7-9 May 2013

Oral Presentation: **Adaptive Management for reduction of peatland fires in Southeast Asia**

iii) Workshop: Public Private Partnership for Indonesian Lowlands
Jakarta 27 June 2013

Oral Presentation: **Oil Palm and Fibre Plantation on Peat: Impacts and BMPs**



Progress Report on Regional Component

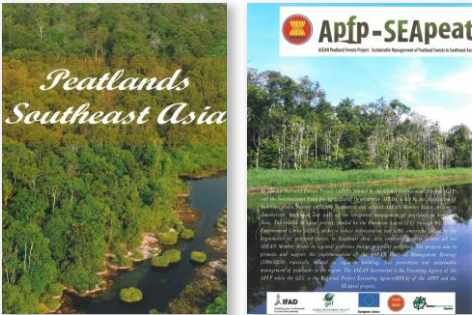
1. Exhibition of winning photos from Photo Contest 2012



1. World Wetlands Day – RMFR – 23 Feb 2013
2. World Forestry Day – Pekan - 21 March 2013



Progress Report on Regional Component



7. “Peat Story Photo Book”
A Compilation of
Peatland Forest
Picture from Photo
Contest 2012 and from
the shelves of GEC



Progress Report on Regional Component



8. “Photo Book”
A Compilation of
Peatland Forest
Picture from Photo
Contest 2012 and from
the collections of GEC



Progress Report on Regional Component

3. ASEAN Peatland Media Award



<http://www.gec.org.my>
<http://www.aseanpeat.net>

The ASEAN Peatland Media Award honour individuals or journalists for their reporting on peatlands that covers sustainability, biodiversity, community livelihood and environmental issues in Southeast Asia region. The competition aims to raise awareness of issues and challenges in peatland management or bring success stories of government action and grassroots effort in peatland conservation in ASEAN countries to the public's attention. The award is organised by the ASEAN Secretariat and Global Environment Centre (GEC) with the support from the IFAD/GEF-ASEAN Peatland Forests Project (APFP) and of EU-SEApeat Project to promote sustainable management of peatlands in Southeast Asia.



Progress on Regional Component

Output 1.3: Sustainable resource mobilisation mechanisms for peatland management in the region established

- Follow up discussions for the potential Carbon project in Kampar peninsular with a private sector partner were not successful – partly due to the current slump in global carbon markets.
- With regard to Raja Musa Forest Reserve in Malaysia discussions are ongoing with Permian Global about support. Data is being collected from the field on above and below ground carbon stocks by GEC team as part of the scientific expedition to Raja Musa. Discussions have been held with US-AID supported LEAF (Lowering Emissions from Asian Forests) and they have agreed to provide short term technical support for a pre-feasibility study in July-August 2013.
- Report of Financing and Incentive Options has been published in April 2013.



Progress on Regional Component

Output 1.4: Regional Technical support and country guidance provided

- Technical coordination and management of country and regional components, including technical expert input and monitoring of country components and overall project.
- Coordination with ASEC and provided guidance to countries on withdrawal requests, audit report and consolidated statement, implementation arrangements.
- Follow up to Mid Term review and input on to completion of the MTR Report and Aide memoire in December 2012- March 2013,
- in Project Management Meeting 11-12 July 2012, Cherating, Pahang
- Preparation of the
 - a) Semi-Annual Progress Report (July –December 2012) in March 2013
- Guidance/Monitoring meeting
 - Indonesia – meetings with Indonesia NC and team: Feb 25, Mar 27 and June 27
 - Malaysia - Meetings with Malaysian NC and team 16 January, 1 April 30 May
 - Vietnam – meeting with NE March 2013



Progress on Regional Component

COMPONENT SUB-OUTCOME 2:

**Protection and sustainable
management of peatlands enhanced**

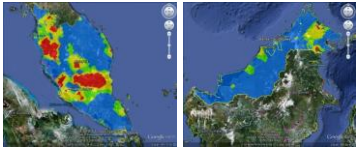
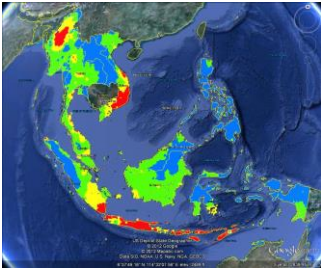


Progress on Regional Component _FDRS

Output 2.1: Mechanisms for effective regional prediction and monitoring of peat fires strengthened

➤ **Development and Testing of the Fire Danger Rating System (FDRS)**

- Meetings with MMD for discussion on the upgrading of the system and preparation for the training workshop in August/September 2013
- Continuing promotion of use of the system in Malaysia and daily updating of 5 FDRS signs around Raja Musa FR.



Progress Report on Regional Component

A **prototype of Water Table Monitoring System** was developed by Universiti Sains Malaysia (USM)

The Prototype was installed at Raja Musa Forest Reserve on 25 May 2012 for initial testing and improvement - faced some technical problem in data transmission.

30 May 2013 for 2nd testing

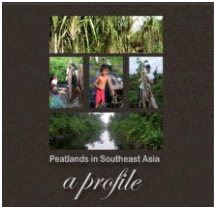
Technical problem is being rectified and system improvement is ongoing.



Progress on Regional Component

Output 2.2: Regional priorities for peatland biodiversity conservation identified

- Peatlands in Southeast Asia – A Profile (revised and available in E-Book format)
- Peatland Biodiversity Management Toolbox is available in soft copy and e-book format (<http://www.aseanpeat.net/ebook/toolbox/index.html>)
- Peatland directory – ongoing
- Peat Assessment follow up In Mekong Countries through SEApeat project



A storehouse for carbon, biodiversity and a source of livelihood.

Progress on Regional Component

Output 2.3: Regional collaboration on peatland carbon storage and climate vulnerability in the region stimulated

- The project has been working with IPCC to assist with the development of Supplementary Guidelines for assessment of greenhouse gas emissions from peatlands – scheduled for completion in December 2013.
- Publication “ Peatland and Climate Change” is being finalized



Progress on Regional Component

Output 2.4: Guidelines for Integrated Management of Peatlands developed and promoted

- Development of Guideline for Integrated Management Planning of Peatlands - ongoing
- Community Guidebook: Best Agriculture Practices on Peatlands for Community Livelihood - ongoing



Progress on Regional Component

COMPONENT SUB-OUTCOME 3:

**Best management practices
from demonstration sites
disseminated**



Progress on Regional Component

Output 3.1: A multi-country network of demonstration sites and sharing experience established

- Data on possible demonstration sites is being compiled – available data has been listed in the SEA Peat Network
- Online application form available from www.aseanpeat.net – require NCs and NEs to promote the network widely
- **SEApeat Network and Database**
There are about 30 peat sites listed on the SEA peat network and 15 resource persons were registered to the website
- **Video Documentary of BMP and demonstration sites** is ongoing



Progress Report on Regional Component

4. Community Peer learning Programme – South and Central Kalimantan

- 16th – 20th June 2013 organised by KLH Indonesia
- Officiated by Ir Arief Yuwono, Deputy Minister for Environment, Degradation Control and Climate Change
- Total of 44 participant – 6 countries (6 FROM Malaysia)
- Banjarmasin and Palangkaraya
- Day 1 –Talk by Indonesian Expert
 - H. Moeahansyah M. Agr – An Overview of peatland in South Kalimantan
 - M. Noor, A. Fahmi, M. Alwi, D.Nursyamsi – Sustainable Agriculture in peatland of Indonesia
 - Acep Akbar & Marinus K. Harun – Sustainable Forestry in Peatland
- Day 2 and 3 – Site Visit



Lesson Learned from
Demonstration by Banjarbaru Forest Research Institute
Credit to : Acep Akbar & Marinus K. Harun



The importance of Canals on Peat soil subsidence



Soil Injection Method to combat against Peatland Fire



Progress Report on Regional Component

BMP of peatlands at pilot/demo sites in Indonesia / SEA

- VIDEO



Progress on Regional Component

COMPONENT SUB-OUTCOME 4:

**Plantation sector actively
contributing to peatland
management**



Progress on Regional Component

Output 4.1: Guidelines for responsible management of existing oil palm and forest plantations on peatlands developed and tested

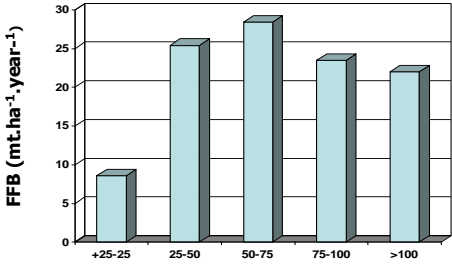
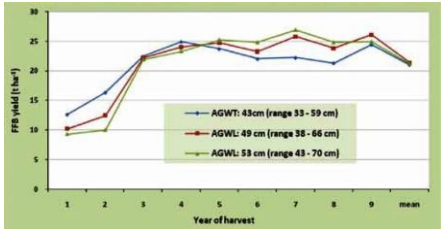
- Project team members have worked to finalise the
A)BMP Guidelines of existing oil palm cultivation on Peatlands -
Published in Aug by RSPO
- B)Guidelines for BMP for maintenance and Rehabilitation of
Natural vegetation associated with peat swamp forests' –
Published in Oct by RSPO
- Presented “Best Management Practices of oil palm cultivation
on peat” in RT-10 Singapore, 30-31 Oct 2012
- Preparation for Proceedings of “[Workshop on Enhancing
Sustainability for Forestry Practices on Peatlands](#)” - ongoing





**FFB YIELDS IN RELATION TO WATER LEVEL IN A PALM OIL
PEATLAND ESTATE**

Hasnol Osman, Ahmad tarmizi Mohamad,
Mohd Haniff Harun, Farawahida
Mohamad Darus and hasimah Mos, **Best
Management Practices for oil palm
planting : optimum ground water
table.** MPOB TT No 472.



Water level from peat surface in
collection drain (cm)
Peat Estate in Riau Sumatera



RSPO Principles and Criteria 2013

- Project provided active input to four day workshop to finalise revisions to RSPO P&C from 22-25 January 2013.
- Project participated in meeting on 25th April 2013 to adopt Revised RSPO P&C
- Project participated in Task Force on 21 May and 5 June to finalise definitions and default guidance to countries without national interpretations
- Project organised meeting with Sime Darby - Malaysia's largest oil palm plantation company on 19th February and 29th May and 25 June to discuss Pilot project to implement guidelines.
- Discussion with other oil palm companies including Wilmar, Golden Agri Resources/PT SMART, PT Minamas on pilot projects in April – June 2013.



RSPO Principles and Criteria 2013

Revised RSPO P&C include specific provisions for peat:

- Guidance from 2 BMP manuals from RSPO PLWG
- Special Management measures to minimise degradation of peat soils in plantations
- Maintenance of water table to average of 50cm in plantations
- Maintenance of buffer zones and HCV areas adjacent to plantations
- Drainability assessment prior to all replanting on peat - with requirement to rehabilitate or transfer to alternate crops of gravity drainage cant be guarranteed
- Ban on extensive planting on peatland and other fragile soils
- Zero burning



Progress on Regional Component

SUB-OUTCOME 5: PROJECT MANAGEMENT



Progress on Regional Component

Outcome 5.2 Project governance mechanism overseen and guided and effectively coordinated, monitored and evaluated

- The RPEA was involved in the finalisation of the Semi-Annual Progress Report (June-Dec 2012)
- The RPEA was active in liaising with the country components and ASEC for the finalisation of the Financial statements and audit of the project for 2012.
- The RPEA coordinated the follow up to the Mid-Term Review
 - a. Technical comments and corrections to the MTR Reepport and Aide memoire
 - b. Meetings with project components for the follow up to the recommendations of the MTR
 - c. Meeting with IFAD on 6th May to discuss follow up to the MTR recommendations and development of a 2nd Phase.
- Project Management Meeting
Organisation of 8th PMM In Manila in July 2013



Overall Achievement to date versus LFA

	Component	% of achievement
Outcome 1	Capacity buiding and institutional strengthening	63
Outcome 1	Protection and sustainable management of peatlands	48
Outcome 3	Promotion of BMP from demonstration sites	52
Outcome 4	Plantation sector contributing to peatland mgmt	56
Outcome 5	Project management	75



Budget and expenditure RPEA



Cumulative expenditure and Budget 2013

Outcomes	Approved GEF Budget for RPEA	Cumulative Budget Spent to Date (Up to Dec 2012)	Balance Budget	Approved Annual Budget 2013
I. Capacity Building for Sustainable Peatland Management	895,000	708,310	186,690	258,500
II. Reduction of Peatland Degradation	325,000	94,074	230,925	134,050
III. Integrated Management and Rehabilitation of Peatlands	55,000	10,350	44,650	25,000
IV. Multi-stakeholder partnerships	76,514	41,920	34,594	39,750
V. Project Management	257,150	253,992	3,158	64,900
TOTAL	1,608,664	1,108,647	500,017	522,200



Summary of Expenditure for Regional (RPEA) Component (2013)

Expenditure category	Approved AWPB 2013	Expenditure Jan-June 2013	Balance 2013	Proposed revised budget 2013	Proposed budget 2014	Total expected expenditure
I Capacity Building	258,500	76,147	182,353	205,600	59,000	264,600
II Reduction in peatland degradation	134,050	14,407	119,643	104,300	22,000	126,300
III Management and rehabilitation	25,000	7,226	17,774	11,000	5,000	16,000
IV Partnerships	39,750	5,827	33,923	26,200	4,000	30,200
V Project Management	64,900	22,656	42,244	57,900	5,000	62,900
Total	522,200	126,264	395,936	405,000	95,000	500,000

