



# Apfp-SEApeat

ASEAN Peatland Forests Project - Sustainable Management of Peatland Forests in Southeast Asia



# CLOSING & KNOWLEDGE WORKSHOP



10 November 2014

Pekanbaru, Indonesia



- Philippines started its active participation in the consultation workshop for the development of the ASEAN Peatland Management Strategy (APMS) held in Malaysia in May 2005.
- There was zero knowledge on peatlands at the start of the APMS implementation
- Philippines then expressed its need for help in identifying and verifying where exactly the reported peatlands are and in building its capacity for peatlands management.



# **PHILIPPINE COMPONENT: KEY ACHIEVEMENTS AND LESSONS LEARNED (2009-2014)**

Rehabilitation and Sustainable Use of  
Peatland Forests in Southeast Asia (APFP)

Sustainable Management of Peatlands in  
Southeast Asia (SEApeat)



# BEFORE

From zero knowledge on peatlands in 2005

# WITH PROJECT INTERVENTION

- to a much increased awareness on peatlands at the grassroots and national levels, with notable increasing support for peatlands protection.







DEPARTMENT OF ENVIRONMENT AND NATURAL RESOURCES



# TRAINING-WORKSHOP ON PEATLAND ASSESSMENT AND MANAGEMENT



**ILIFAD**  
Enabling poor rural people  
to overcome poverty

**NOVEMBER 22 - 26, 2010**  
**Butuan City**





# STUDY TOUR IN MALAYSIA & PEER LEARNINGS





# ON-THE-JOB TRAINING FOR COMMUNITIES AROUND THE PILOT SITES ON PARTICIPATORY ASSESSMENTS



## Agusan Marsh

November 16-19, 2011  
in Talacogon, ADS  
35 participants

## Leyte Sab-a

December 13-17, 2011  
in Alang-alang, Leyte  
40 participants



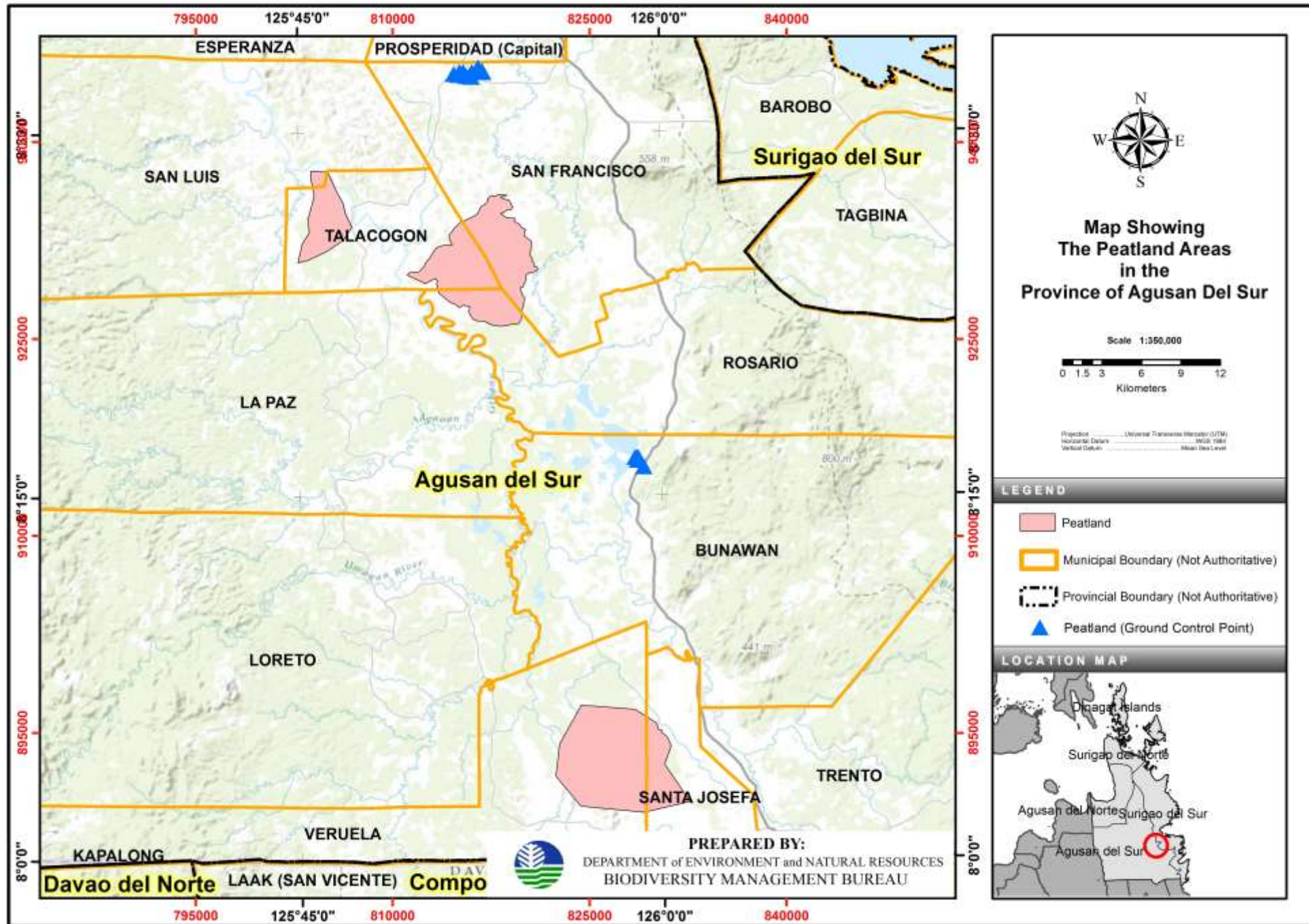
- From Map of probable peatlands



- to a Map of confirmed peatlands







# BEFORE

- From the category of the “least famous forest type” and least botanized



# WITH PROJECT INTERVENTION

- to a highly botanized forest and explored forest formation with established permanent vegetation plot





# **BEFORE**

- Limited conservation effort

# **WITH PROJECT INTERVENTION**

- PROPOSED INCLUSION OF SOME INTACT TO SEMI-INTACT PEATLANDS IN THE NATIONAL PROTECTED AREAS SYSTEM AND AS CRITICAL HABITAT





# BEFORE

- NO NATIONAL OR LOCAL POLICES DIRECTLY MENTIONING PEATLAND PROTECTION

# WITH PROJECT INTERVENTION

- APPROVED LOCAL ORDINANCES ON PEATLAND PROTECTION
- DRAFT GUIDELINES FOR PLANNERS AND DEVELOPERS IN AND AROUND PEATLANDS UNDERGOING REVIEW AT THE NATIONAL LEVEL



# ACTIVE ENGAGEMENT OF LGUs

- Active engagement in the planning, management and execution of project activities in the demonstration sites have proven to be effective in ensuring the smooth implementation of activities in their respective areas of jurisdiction



Republic of the Philippines  
CARAGA ADMINISTRATIVE REGION XIII  
Province of Agusan del Sur  
Municipality of Talacogon  
-oOo-  
OFFICE OF THE SANGGUNIANG BAYAN

"An ordinance passed during 40<sup>th</sup> Regular Session of the 9<sup>th</sup> Sangguniang Bayan of Talacogon, Agusan del Sur at its Session Hall on May 26, 2014 at 9:40 a.m."

## MUNICIPAL ORDINANCE NO. 203-2014

**"AN ORDINANCE FOR THE PROTECTION OF THE UNIQUE STUNTED PEAT SWAMP FOREST (PSF) WITHIN THE MUNICIPAL JURISDICTION OF TALACOGON, AGUSAN DEL SUR AND PROVIDING FUNDS THEREOF."**

resources shall not be alienated. The exploration, development, and utilization of natural



Republic of the Philippines  
Province of Agusan del Sur  
MUNICIPALITY OF SAN FRANCISCO  
-oOo-

## 17<sup>th</sup> SANGGUNIANG BAYAN

EXCERPTS FROM THE MINUTES OF THE REGULAR SESSION OF THE 17<sup>th</sup> SANGGUNIANG BAYAN OF SAN FRANCISCO, AGUSAN DEL SUR ON JANUARY 09, 2013 AT THE SANGGUNIANG BAYAN SESSION HALL.

### PRESENT:

Hon. Restie G. Bandong	-	SB Member
Hon. Salvador R. Retuerto	-	SB Member (Temporary Presiding Officer)
Hon. Carlos P. Tardoa	-	SB Member

Member (President Liga ng mga Barangay)  
Member (President SK Federation)

Mayor (Presiding Officer)

FOREST (PSF) IN THE BARANGAYS CAIMPUGAN AND NEW VISAYAS, ALL OF SAN FRANCISCO, AGUSAN DEL SUR

Authored by:

HON. LERRIZA V. DE LEON

## ORDINANCE NO. 01-2013

**"ORDINANCE FOR THE PROTECTION OF THE UNIQUE STUNTED PEAT SWAMP FOREST (PSF) IN THE BARANGAYS CAIMPUGAN AND NEW VISAYAS, ALL OF SAN FRANCISCO, AGUSAN DEL SUR"**

In session

is that "All  
teum and  
forest or  
are owned  
er natural  
ment, and  
ntrol and

etlands in  
based on  
is Agusan  
of Metro  
esh water

Sanctuary

Containing an area of 17,177 hectares under Presidential Proclamation No. 913 dated October 31, 1996 as part of the National Integrated Protected Area System (NIPAS);

### SECTION 12. REPEALING CLAUSE

All ordinances or parts thereof inconsistent with the provisions of this ordinance are hereby repealed or amended accordingly.

### SECTION 13. EFFECTIVITY

This ordinance shall take effect immediately upon its approval.

### SECTION 14. DATE APPROVED: May 26, 2014

I HEREBY CERTIFY to the correctness of the foregoing.

SARAY E. TORRES, SR., MBA  
Secretary to the Sanggunian

### ATTENDED:

RENEZUELO S. BONGAS  
Municipal Social Worker  
Presiding Officer

THEODORE M. BAUTISTA  
SB Member/Author

### APPROVED:

LERRIZA V. DE LEON  
Municipal Mayor

### SECTION 12. REPEALING CLAUSE

the provisions of the ordinance are hereby repealed and modified accordingly by the Sanggunian.

### SECTION 13. EFFECTIVITY - This ordinance shall take effect immediately upon approval.

APPROVED on January 09, 2013.

WE HEREBY CERTIFY  
THAT THIS IS A TRUE AND ACCURATE COPY  
OF THE ORDINANCE DULY ENACTED  
BY THE SANGGUNIANG BAYAN ON JANUARY 09, 2013

RENEZUELO S. BONGAS  
Secretary to the Sanggunian  
SALVADOR R. RETURTO  
Sangguniang Bayan Member  
Temporary Presiding Officer

### APPROVED:

LERRIZA V. DE LEON  
Municipal Mayor  
17-13-2  
Date



ORDINANCE NO. \_\_\_\_  
Series of 2014

REPUBLIC OF THE PHILIPPINES  
MUNICIPALITY OF \_\_\_\_\_

SANGGUNIANG PANGLUNGSOD/BAYAN

ORDINANCE NO. \_\_\_\_  
Series of 2014

**"AN ORDINANCE PROTECTING THE PEATLANDS IN THE  
MUNICIPALITY, ESTABLISHING A LOCAL CONSERVATION AREA IN  
\_\_\_\_\_, INITIATING ITS ESTABLISHMENT AS A  
CRITICAL HABITAT, PROVIDING FUNDS THEREFOR, AND FOR OTHER  
PURPOSES"**

WHEREAS, portions of the Leyte Sab-a Basin within the territorial jurisdiction of the Municipality have been identified and confirmed as "peatland" or areas where peat can be found;

WHEREAS, a peatland is a very rare type of wetland ecosystem in the Philippines and has been confirmed to exist only in the Leyte Sab-a Basin and the Agusan Marsh;

WHEREAS, other :  
irrigation

WHEREAS, and carbon sequestration and storage;

WHEREAS, peatlands are threatened by conversion and unsustainable which results to their degradation and loss and increases the risks of flooding during wet season and fire during dry season;

WHEREAS, there is an urgent need to protect and conserve these rare peatlands located within the Municipality, to ensure their continued existence and supply of the products and services that these provide for the benefit of the present and future generations of constituents of the Municipality;

WHEREAS, Article II, Section 16 of the 1987 Constitution declares that the State shall protect and advance the right of the people to a balanced and healthful ecology in accord with the rhythm and harmony of nature;

WHEREAS, Section 3(j) of the Local Government Code of 1991 (Republic Act No. 7160) states that local government units (LGUs) shall share with the national government the responsibility in the management and maintenance of ecological balance within their territorial jurisdiction, subject to the provisions of the said Code and national policies;

WHEREAS, Section 16 of the Local Government Code, states that every LGU shall exercise the powers expressly granted, those necessarily implied therefrom,

**"AN ORDINANCE PROTECTING THE PEATLANDS IN THE  
MUNICIPALITY, ESTABLISHING A LOCAL CONSERVATION AREA IN  
\_\_\_\_\_, INITIATING ITS ESTABLISHMENT AS A  
CRITICAL HABITAT, PROVIDING FUNDS THEREFOR, AND FOR OTHER  
PURPOSES"**

as the 'Peatland  
as the 'Peatland

nal policies, it is  
and conserve the  
ed supply of the  
the rights of its  
the rhythm and

ed by the DENR  
on).

following terms

d disposable and  
mineral, forest,

its species or subspecies  
real, valuable or other  
is at risk of extinction;

t, near or above the land  
are to promote wetland or  
d activity that are adapted  
swamp, marsh and shallow

of flora and fauna, in all  
is in captivity or are being

t when wildlife species or  
cluded in population;

unicipal legislation which  
portions a given political  
and future projection of

ermination of Peatlands. - The  
minent with principles of  
y reduction, biodiversity  
ation, and disaster risk

ment and  
establishment of  
it, situated  
unicipal ENDO  
achieved of an  
al habitats.

he Municipal  
ll be included  
in regard, the  
lands are be  
statements for  
selection of a  
with. Further  
land shall be

tion with the  
reaction to be  
ceptibility shall  
are suited to  
modification of

mediate with  
areas for the  
the balance

pen than one  
er for or  
not at least  
and is hereby  
automatically be  
extension and  
etc.

not with this  
Distance is  
volatility and

the lapse of  
after posting  
Municipality

quired  
with  
of this

not



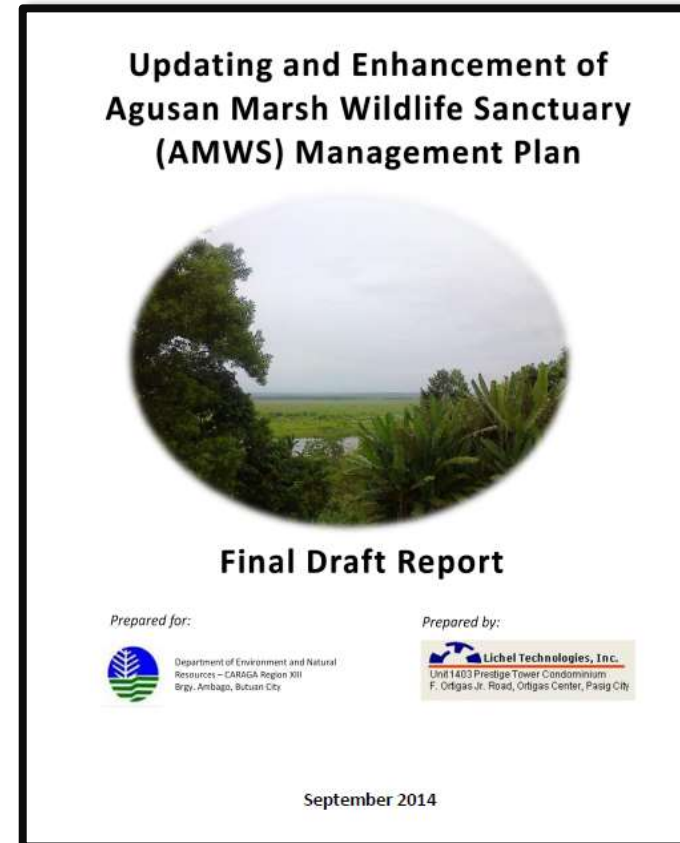


# BEFORE

- NO LAND USE PLANNING

# WITH PROJECT INTERVENTION

- INCLUSION OF PEATLANDS IN THE COMPREHENSIVE LAND-USE PLANS (CLUP) OF PARTICIPATING MUNICIPALITIES





- Inclusion of peatland to the Comprehensive Land Use Plan of the municipality of San Francisco, Agusan del Sur

## TABLE OF CONTENTS

Foreword	
Acknowledgment	
Messages	
Municipal Development Council Endorsement	
Sangguniang Bayan Resolution	
<b>I. BRIEF PROFILE OF THE MUNICIPALITY</b>	
A. History	
B. Human Resources	
Population Composition	
Population Distribution	
Population Changes	
Other Population Characteristics	
Population Projection and Estimates	
C. Geographical, Administrative/ Political Profile	
D. Natural and Physical Environment	
Climatological Condition	
Topography	
Slope	

Soil	9
E. Conservation Features and Other Interest Areas	14
Mineral Resources	14

Social Services/ Facilities/ Amenities	35
<b>IV. ECONOMIC STRUCTURE</b>	<b>44</b>
Agriculture	44
Commerce and Trade	46
Industry	47
Tourism	47
<b>V. EXISTING LAND USE AND TREND</b>	<b>44</b>
A. Settlements	50
Residential	50
Commercial	50
Institutional	50
Industrial	51
Tourism	51
Parks/ Open Spaces	51
B. Production	52
Agricultural	52
C. Protection	52
Watershed Area	52
Agusan Marsh/Peat land	53

D. In	
T	
C	
E. C	
F. V	
G. F	
<b>VI. COMPRE</b>	
Vision	
Missi	
Goals	
Objec	
The S	
Deve	
The L	
G	
U	
Priori	
GLOS	
LIST C	

Municipality of San Francisco  
Agusan del Sur

## Comprehensive Land Use Plan (2013 - 2022)

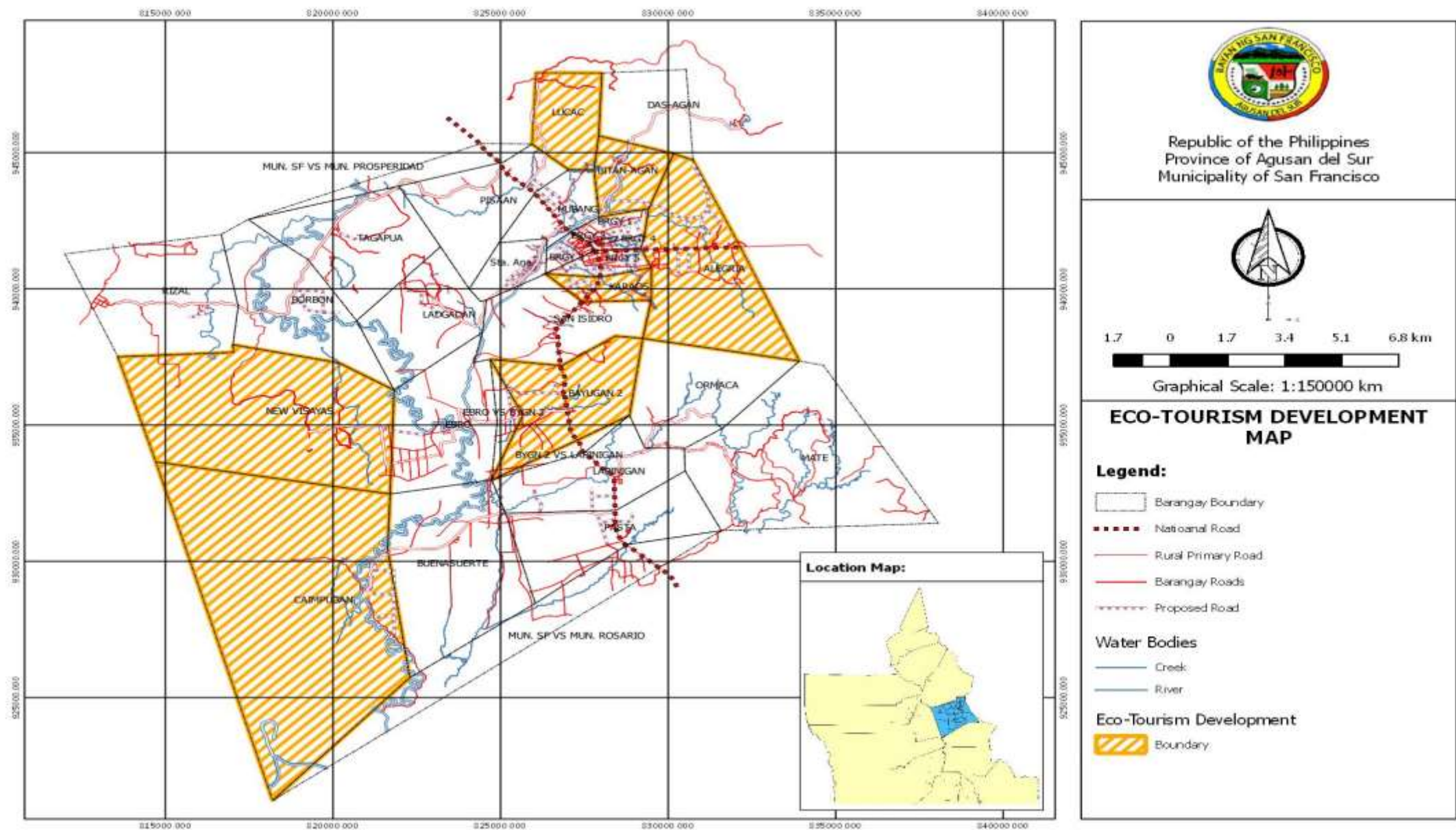


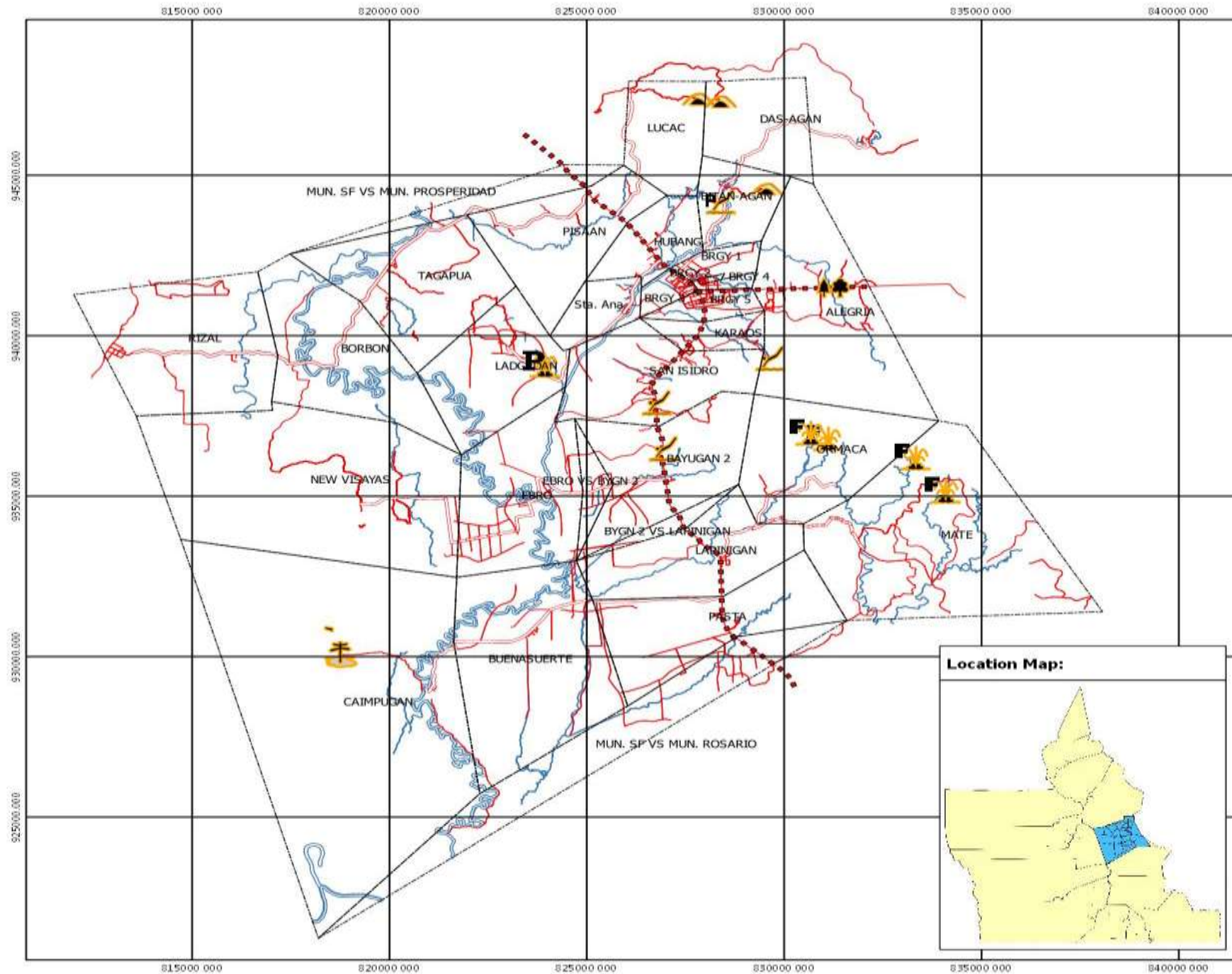
## CLUP VOLUME I THE LAND USE PLAN



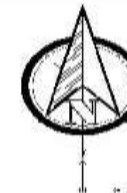


# CLUP MAPS OF SAN FRANCISCO, AGUSAN DEL SUR





Republic of the Philippines  
Province of Agusan del Sur  
Municipality of San Francisco



1.7 0 1.7 3.4 5.1 6.8 km



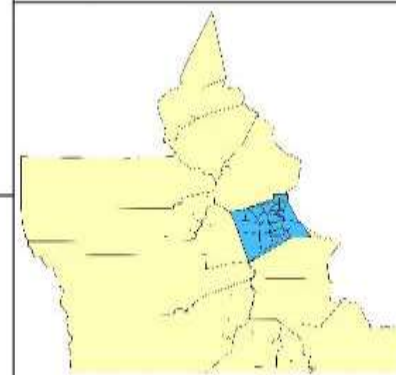
Graphical Scale: 1:150000 km

## ECO - TOURISM MAP

### Legend:

- |                     |                       |
|---------------------|-----------------------|
| Barangay Boundary   | <b>Tourism</b>        |
| National Road       | Cave                  |
| Rural Primary Road  | Falls                 |
| Barangay Roads      | Resort                |
| <b>Water Bodies</b> | Resort - Potential    |
| River               | Salt Spring Potential |
|                     | Tree Park             |
|                     | Wonder Land           |

### Location Map:



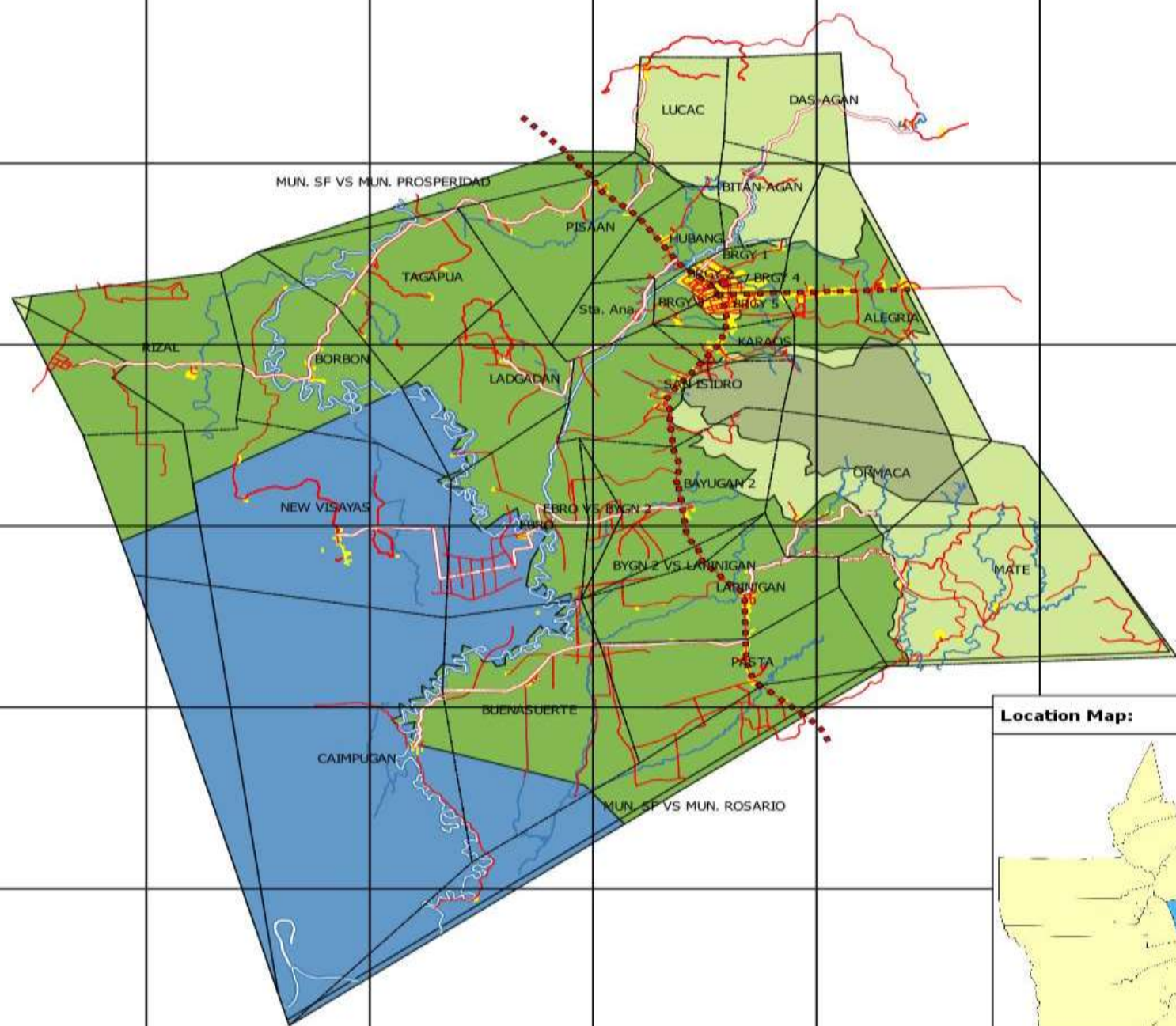


815000 000 820000 000 825000 000 830000 000 835000 000 840000 000

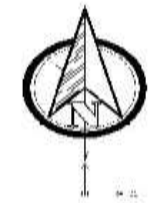
815000 000 820000 000 825000 000 830000 000 835000 000 840000 000

925000 000 930000 000 935000 000 940000 000 945000 000

925000 000 930000 000 935000 000 940000 000 945000 000



Republic of the Philippines  
Province of Agusan del Sur  
Municipality of San Francisco



Graphical Scale: 1:150000 km

### EXISTING LAND USE MAP

#### Legend:

- Barangay Boundary
- National Road
- Rural Primary Road
- Barangay Roads

#### Water Bodies

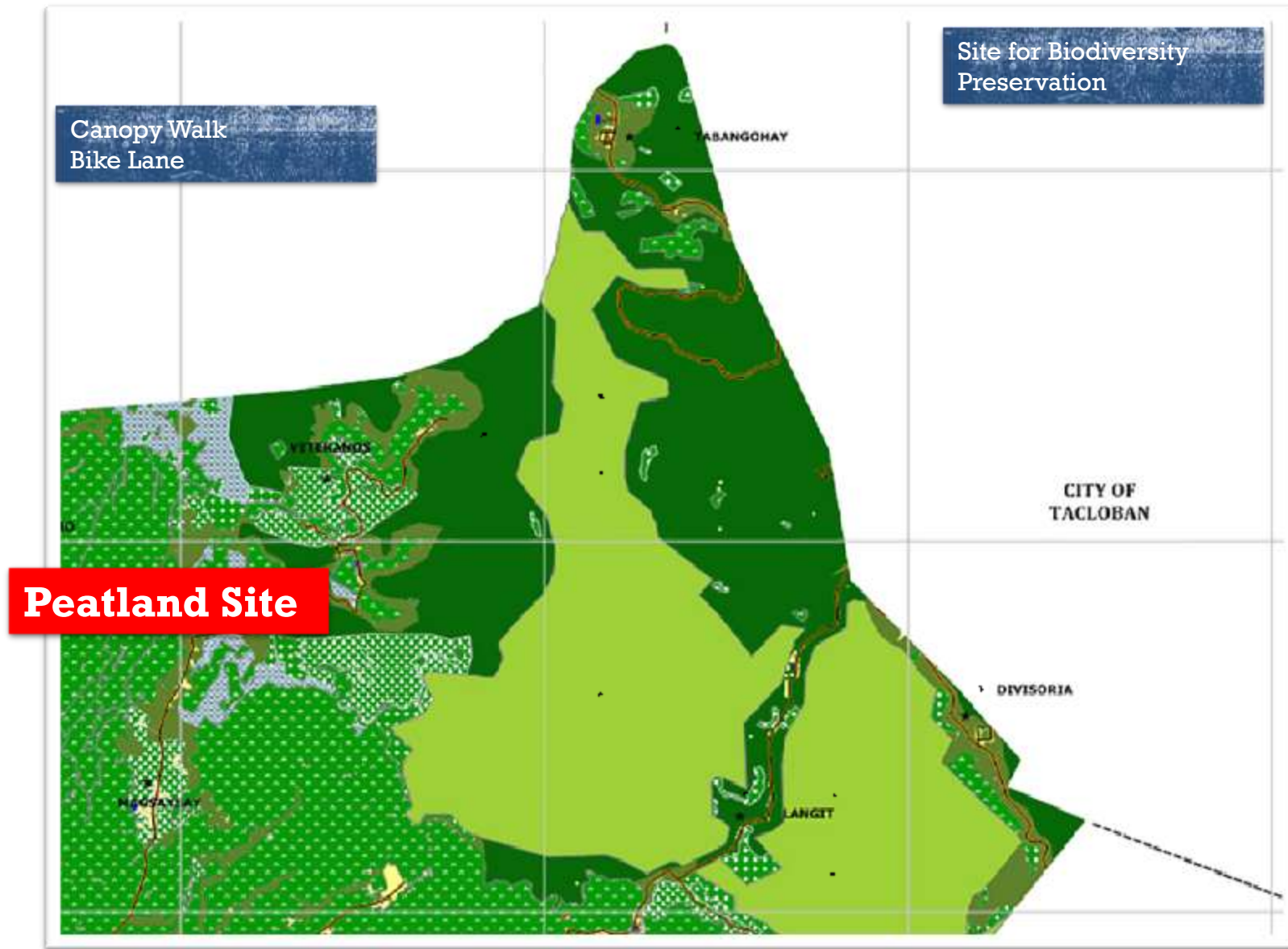
- Creek
- River

#### Land Use

- Built-up Area
- Production Agriculture
- Production Forest
- Protection Forest
- Protection Wetland



## Alangalang Protection Land Use (from CLUP of Alangalang, Leyte)



# BEFORE

- From degraded and abandoned peatlands



# WITH PROJECT INTERVENTION

- to successful and visible examples of rehabilitation efforts and peatlands under sustainable agriculture some of which are ripe for replication





# REHABILITATION IN CAIMPUGAN



## LESSONS IN REHABILITATION EFFORTS

- identify planting materials that is both **indigenous** and **typhoon resilient**

Planted Cutting



Putat wildling survived



Bangkal wildling



Mambog wildling







## **REHABILITATION IN MAHARLIKA**

- The community used wildlings and cuttings of indigenous species
- Based from the experience of community using “finger-sized” (in diameter) cuttings had higher survival than the battery sized standard of the Forest Management Bureau



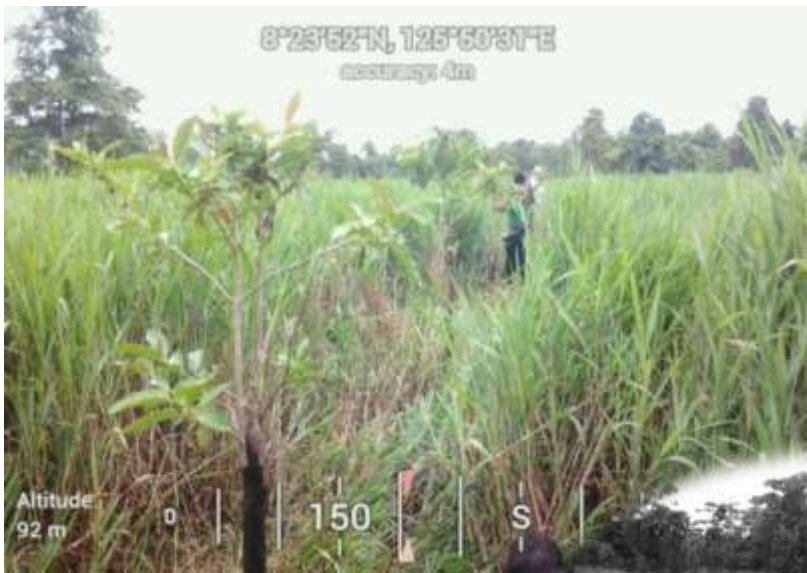




# **LUMBIA PLANTATION IN TALACOCON**







## KEY ACHIEVEMENT IN REHAB EFFORTS

- **200 hectares** of degraded peatlands in Agusan Marsh was rehabilitated through the National Greening Program in partnership with Philippine Tropical Forest Conservation Foundation (PTFCF) and Kahugpungan sa Malahutayong Kababayen-an Sa La Flora Association ,Inc.
- **More than the expected target** during the Project implementation

**Rehab Effort in Brgy. La Flora, Talacogon**







## **REHAB IN LANGIT, ALANGALANG, LEYTE**

- Surviving lumbia after the super typhoon Yolanda (Haiyan)





# FLOATING GARDEN IN LA FLORA



# FLOATING GARDEN IN CAIMPUGAN



## BEFORE:

located in Gibong River and was destroyed due to strong current brought by typhoon



## PRESENT:

Placed in a more secured site





# DEMO PROJECT AT SAN TEODORO, BUNAWAN, AGUSAN DEL SUR WITH PARTNER PO – PASAKK, INC



## SUSTAINABLE AGRICULTURE IN DEGRADED PEATLANDS

- Sustainable agriculture provided the local communities with potential **livelihood opportunities.**





# FLOATING GARDEN IN SABANG GIBONG WAS DESTROYED BY TYPHOON AGATON

## SUSTAINABLE AGRICULTURE IN DEGRADED PEATLANDS

- The strategies can be further improved (i.e. selection of planting materials, making the farm/garden **typhoon resilient**) thru the process of learning-by-doing.

### AFTER TYPHOON AGATON: VERTICAL BACKYARD FLOATING GARDEN



LEYTE SAB-A PILOT SITE CONDUCTED TRAINING ON FUNDAMENTALS OF ORGANIC AGRICULTURE FOR LIVELIHOOD PRODUCTION PROJECT THRU: NATURAL FARMING SYSTEMS IN PEATLAND LAST 26-28 MAY 2014 IN VISAYAS STATE UNIVERSITY, ALANGALANG CAMPUS.





*"Keeping our peatlands alive through  
multistakeholders approach."*



*Thank you!*